



# **BARROW COUNTY BOARD OF EDUCATION WINDER, GEORGIA**

**ANNUAL FINANCIAL REPORT  
FOR THE FISCAL YEAR ENDED  
JUNE 30, 2019  
(Including Independent Auditor's Reports)**



BARROW COUNTY BOARD OF EDUCATION

- TABLE OF CONTENTS -

Page

SECTION I

FINANCIAL

INDEPENDENT AUDITOR'S REPORT

REQUIRED SUPPLEMENTARY INFORMATION

MANAGEMENT'S DISCUSSION AND ANALYSIS

i

EXHIBITS

BASIC FINANCIAL STATEMENTS

GOVERNMENT-WIDE FINANCIAL STATEMENTS

A	STATEMENT OF NET POSITION	1
B	STATEMENT OF ACTIVITIES	2

FUND FINANCIAL STATEMENTS

C	BALANCE SHEET	
	GOVERNMENTAL FUNDS	4
D	RECONCILIATION OF THE GOVERNMENTAL FUNDS BALANCE SHEET	
	TO THE STATEMENT OF NET POSITION	5
E	STATEMENT OF REVENUES, EXPENDITURES AND CHANGES	
	IN FUND BALANCES	
	GOVERNMENTAL FUNDS	6
F	RECONCILIATION OF THE GOVERNMENTAL FUNDS STATEMENT	
	OF REVENUES, EXPENDITURES AND CHANGES IN FUND	
	BALANCES TO THE STATEMENT OF ACTIVITIES	7
G	STATEMENT OF FIDUCIARY NET POSITION	
	FIDUCIARY FUNDS	8
H	NOTES TO THE BASIC FINANCIAL STATEMENTS	10

SCHEDULES

REQUIRED SUPPLEMENTARY INFORMATION

1	SCHEDULE OF PROPORTIONATE SHARE OF THE NET PENSION LIABILITY	
	TEACHERS RETIREMENT SYSTEM OF GEORGIA	39
2	SCHEDULE OF PROPORTIONATE SHARE OF THE NET PENSION LIABILITY	
	EMPLOYEES' RETIREMENT SYSTEM OF GEORGIA	40
3	SCHEDULE OF PROPORTIONATE SHARE OF THE NET PENSION LIABILITY	
	PUBLIC SCHOOL EMPLOYEES RETIREMENT SYSTEM OF GEORGIA	41
4	SCHEDULE OF PROPORTIONATE SHARE OF THE NET OPEB LIABILITY	
	SCHOOL OPEB FUND	42
5	SCHEDULE OF CONTRIBUTIONS - TEACHERS RETIREMENT SYSTEM OF GEORGIA	43
6	SCHEDULE OF CONTRIBUTIONS - EMPLOYEES' RETIREMENT SYSTEM OF GEORGIA	44
7	SCHEDULE OF CONTRIBUTIONS - SCHOOL OPEB FUND	45
8	NOTES TO THE REQUIRED SUPPLEMENTARY INFORMATION	46

BARROW COUNTY BOARD OF EDUCATION

- TABLE OF CONTENTS -

	<u>Page</u>
SECTION I	
FINANCIAL	
SCHEDULES	
REQUIRED SUPPLEMENTARY INFORMATION	
9 SCHEDULE OF REVENUES, EXPENDITURES AND CHANGES IN FUND BALANCES - BUDGET AND ACTUAL GENERAL FUND	47
SUPPLEMENTARY INFORMATION	
10 SCHEDULE OF EXPENDITURES OF FEDERAL AWARDS	48
11 SCHEDULE OF STATE REVENUE	49
12 SCHEDULE OF APPROVED LOCAL OPTION SALES TAX PROJECTS	51
SECTION II	
COMPLIANCE AND INTERNAL CONTROL REPORTS	
INDEPENDENT AUDITOR'S REPORT ON INTERNAL CONTROL OVER FINANCIAL REPORTING AND ON COMPLIANCE AND OTHER MATTERS BASED ON AN AUDIT OF FINANCIAL STATEMENTS PERFORMED IN ACCORDANCE WITH <i>GOVERNMENT AUDITING STANDARDS</i>	
INDEPENDENT AUDITOR'S REPORT ON COMPLIANCE FOR EACH MAJOR FEDERAL PROGRAM AND ON INTERNAL CONTROL OVER COMPLIANCE REQUIRED BY THE UNIFORM GUIDANCE	
SECTION III	
AUDITEE'S RESPONSE TO PRIOR YEAR FINDINGS AND QUESTIONED COSTS	
SUMMARY SCHEDULE OF PRIOR YEAR FINDINGS AND QUESTIONED COSTS	
SECTION IV	
FINDINGS AND QUESTIONED COSTS	
SCHEDULE OF FINDINGS AND QUESTIONED COSTS	

SECTION I  
FINANCIAL



## DEPARTMENT OF AUDITS AND ACCOUNTS

270 Washington Street, S.W., Suite 1-156  
Atlanta, Georgia 30334-8400

**Greg S. Griffin**  
STATE AUDITOR  
(404) 656-2174

### INDEPENDENT AUDITOR'S REPORT

The Honorable Brian P. Kemp, Governor of Georgia  
Members of the General Assembly of the State of Georgia  
Members of the State Board of Education  
and  
Superintendent and Members of the  
Barrow County Board of Education

#### **Report on the Financial Statements**

We have audited the accompanying financial statements of the governmental activities, each major fund, and the aggregate remaining fund information of the Barrow County Board of Education (School District), as of and for the year ended June 30, 2019, and the related notes to the financial statements, which collectively comprise the School District's basic financial statements as listed in the table of contents.

#### ***Management's Responsibility for the Financial Statements***

Management is responsible for the preparation and fair presentation of these financial statements in accordance with accounting principles generally accepted in the United States of America; this includes the design, implementation, and maintenance of internal control relevant to the preparation and fair presentation of financial statements that are free from material misstatement, whether due to fraud or error.

#### ***Auditor's Responsibility***

Our responsibility is to express opinions on these financial statements based on our audit. We conducted our audit in accordance with auditing standards generally accepted in the United States of America and the standards applicable to financial audits contained in *Government Auditing Standards*, issued by the Comptroller General of the United States. Those standards require that we plan and perform the audit to obtain reasonable assurance about whether the financial statements are free from material misstatement.

An audit involves performing procedures to obtain audit evidence about the amounts and disclosures in the financial statements. The procedures selected depend on the auditor's judgment, including the assessment of the risks of material misstatement of the financial statements, whether due to fraud or error. In making those risk assessments, the auditor considers internal control relevant to the entity's preparation and fair presentation of the financial statements in order to design audit procedures that are appropriate in the circumstances, but not for the purpose of expressing an opinion on the effectiveness of the entity's internal control. Accordingly, we express no such opinion. An audit also includes evaluating the appropriateness of accounting policies used and the reasonableness of significant accounting estimates made by management, as well as evaluating the overall presentation of the financial statements.

We believe that the audit evidence we have obtained is sufficient and appropriate to provide a basis for our audit opinions.

### ***Opinions***

In our opinion, the financial statements referred to above present fairly, in all material respects, the respective financial position of the of the governmental activities, each major fund, and the aggregate remaining fund information of the School District as of June 30, 2019, and the respective changes in financial position for the year then ended in accordance with accounting principles generally accepted in the United States of America.

### ***Other Matters***

#### ***Required Supplementary Information***

Accounting principles generally accepted in the United States of America require that the Management's Discussion and Analysis and required supplementary information listed in the table of contents be presented to supplement the basic financial statements. Such information, although not a part of the basic financial statements, is required by the Governmental Accounting Standards Board, who considers it to be an essential part of financial reporting for placing the basic financial statements in an appropriate operational, economic, or historical context. We have applied certain limited procedures to the required supplementary information in accordance with auditing standards generally accepted in the United States of America, which consisted of inquiries of management about the methods of preparing the information and comparing the information for consistency with management's responses to our inquiries, the basic financial statements, and other knowledge we obtained during our audit of the basic financial statements. We do not express an opinion or provide any assurance on the information because the limited procedures do not provide us with sufficient evidence to express an opinion or provide any assurance.

#### ***Other Information***

Our audit was conducted for the purpose of forming opinions on the financial statements that collectively comprise the School District's basic financial statements. The accompanying supplementary information, as listed in the table of contents, is presented for the purposes of additional analysis and is not a required part of the basic financial statements. The *Schedule of Expenditures of Federal Awards* is presented for purposes of additional analysis as required by Title 2 U. S. Code of Federal Regulations (CFR) Part 200, Uniform Administrative Requirements, Cost Principles, and Audit Requirements for Federal Awards, and is also not a required part of the basic financial statements.

The accompanying supplementary information is the responsibility of management and was derived from and relates directly to the underlying accounting and other records used to prepare the basic financial statements. Such information has been subjected to the auditing procedures applied in the audit of the basic financial statements and certain additional procedures, including comparing and reconciling such information directly to the underlying accounting and other records used to prepare the basic financial statements or to the basic financial statements themselves, and other additional procedures in accordance with auditing standards generally accepted in the United States of America. In our opinion, the information is fairly stated, in all material respects, in relation to the basic financial statements taken as a whole.

### **Other Reporting Required by *Government Auditing Standards***

In accordance with *Government Auditing Standards*, we have also issued our report dated March 25, 2020 on our consideration of the School District's internal control over financial reporting and on our tests of its compliance with certain provisions of laws, regulations, contracts, and grant agreements and other matters. The purpose of that report is solely to describe the scope of our testing of internal control over financial reporting and compliance and the results of that testing, and not to provide an opinion on the effectiveness of the School District's internal control over financial reporting or on compliance. That report is an integral part of an audit performed in accordance with *Government Auditing Standards* in considering the School District's internal control over financial reporting and compliance.

A copy of this report has been filed as a permanent record in the office of the State Auditor and made available to the press of the State, as provided for by Official Code of Georgia Annotated section 50-6-24.

Respectfully submitted,

A handwritten signature in black ink, appearing to read "Greg S. Griffin". The signature is fluid and cursive, with the first name "Greg" being the most prominent.

Greg S. Griffin  
State Auditor

March 25, 2020

BARROW COUNTY BOARD OF EDUCATION  
MANAGEMENT'S DISCUSSION AND ANALYSIS  
FOR THE FISCAL YEAR ENDED JUNE 30, 2019

## INTRODUCTION

The Barrow County Board of Education's (School District's) financial statements for the fiscal year ended June 30, 2019 includes a series of basic financial statements that report financial information for the School District as a whole, its funds, and its fiduciary responsibilities. The Statement of Net Position and the Statement of Activities provide financial information about all of the School District's activities and present both a short-term and long-term view of the School District's finances on a global basis. The fund financial statements provide information about all of the School District's funds. Information about these funds, such as the School District's general fund, is important in its own right, but will also give insight into the School District's overall soundness as reported in the Statement of Net Position and the Statement of Activities.

## FINANCIAL HIGHLIGHTS

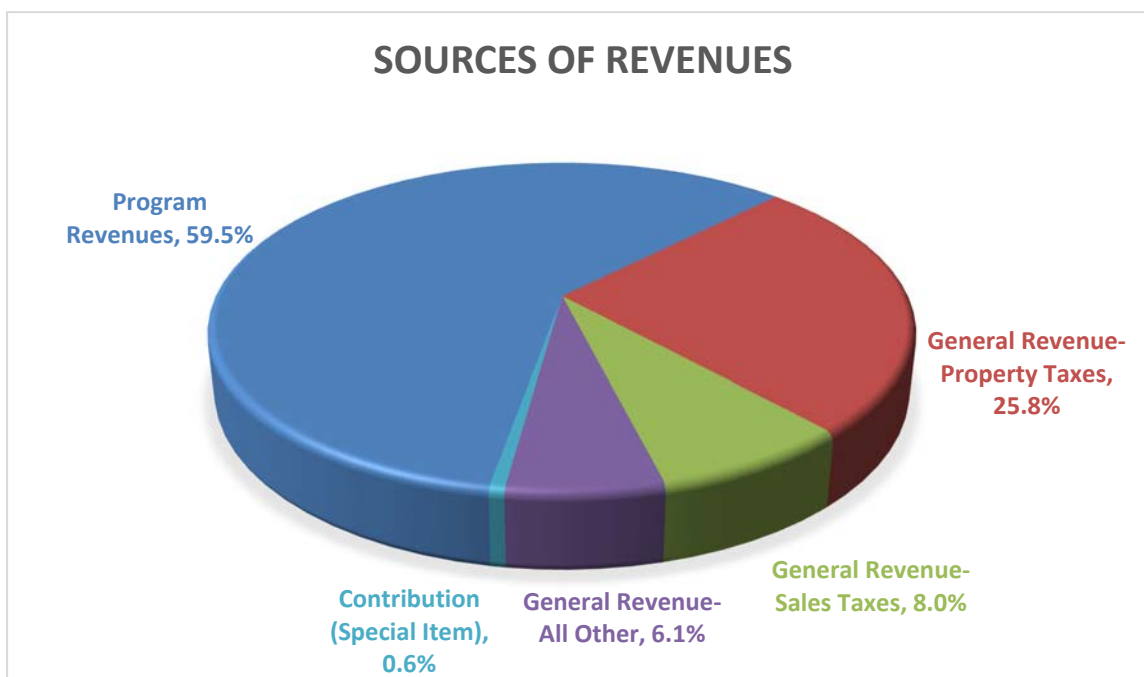
Key financial highlights for fiscal year 2019 are as follows:

On the government-wide financial statements:

- The Barrow County voters passed the sixth one-percent sales tax for educational purposes (ESPLOST) for another five years (October 2021 - September 2026) on March 19, 2019. The voters also approved the issuance of \$40.0 million general obligation bonds. The School District anticipates part of the bonds will be issued in 2020 but the remaining issuance of bonds will depend on future growth of the County.
- Net position increased \$14.3 million, which was due to increase state funding along with growth in the property tax digest for Barrow County.
- The School District had \$148.3 million in expenses relating to governmental activities; \$96.8 million of these expenses were offset by program specific charges for services, grants and contributions. General revenues (primarily property and sales taxes) of \$65.0 million were adequate to provide for these programs.
- In June 2015, the Governmental Accounting Standards Board (GASB) issued Statement No. 75, *Accounting and Financial Reporting for Postemployment Benefits Other than Pensions*. This statement requires all School Districts to recognize and disclose the School District's proportionate share of the collective net OPEB liability for each cost sharing benefit plan in which the School District participates. Due to the adoption of GASB Statement No. 75 in 2018, net position was restated and decreased by \$113.5 million. Therefore, the School District's liabilities and deferred inflow of resources exceeded assets and deferred outflow of resources by \$41.9 million at June 30, 2019. Net position reflects the difference between all assets and deferred outflows of resources of the School District (including capital assets, net of depreciation) and all liabilities, both short-term and long-term, and deferred inflows of resources. The net position at June 30, 2019 of negative \$41.9 million represents the above negative restatement of \$113.5 million and an increase of \$14.4 million when compared to the prior year. This increase is due to additional state funds received, sales tax revenues, and additional property taxes collected.
- As stated above, general revenues accounted for \$65.0 million or nearly 39.9% of all revenues totaling almost \$162.7 million. Program specific revenues in the form of charges for services, grants, and contributions accounted for the balance of these revenues. (Percentages in table below have been rounded to one decimal place).



BARROW COUNTY BOARD OF EDUCATION  
MANAGEMENT'S DISCUSSION AND ANALYSIS  
FOR THE FISCAL YEAR ENDED JUNE 30, 2019

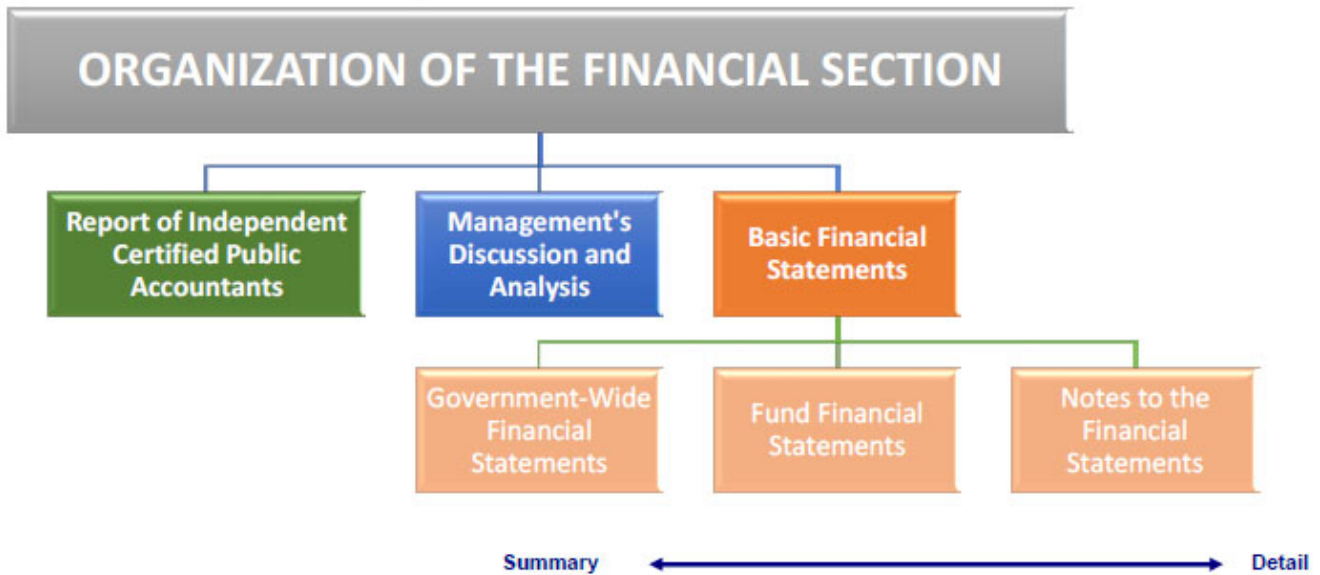


- The current ratio, which measures the School District's ability to transform current assets into cash and pay its short-term liabilities, was 2.95 for the fiscal year ended June 30, 2019. Generally, a ratio greater than 2.0 is considered very financially stable.
- In fiscal year 2019 the School District received a contribution from Barrow County government of \$947,684.00 toward the construction of athletic turf fields for Apalachee High School and Winder-Barrow High School.

On the fund financial statements:

- Among major funds, the general fund had \$148.7 million in revenues and nearly \$142.4 million in expenditures. The general fund balance of roughly \$28.2 million at June 30, 2019 increased by over \$6.3 million from the prior year. This increase in general fund balance resulted primarily because of increased revenues from the State of Georgia and additional local funds.
- Capital project fund ended the year with a fund balance of \$17.2 million, a decrease of \$8.8 million or 33.7% from the previous year primarily due to continued construction on the new high school (Barrow Arts & Sciences Academy) and increase in school construction and related liabilities.
- Moody's Investor Services stated the Barrow County School District's credit position is very high quality at Aa2 rating. Notable credit factors include a favorable financial position, a large tax base and a solid wealth and income profile.

BARROW COUNTY BOARD OF EDUCATION  
MANAGEMENT'S DISCUSSION AND ANALYSIS  
FOR THE FISCAL YEAR ENDED JUNE 30, 2019



## OVERVIEW OF THE FINANCIAL STATEMENTS

These financial statements consist of three parts; management's discussion and analysis (this section), the basic financial statements including notes to the financial statements and required supplementary information. The basic financial statements include two levels of statements that present different views of the School District. These include the government-wide and fund financial statements.

The government-wide financial statements include the 'Statement of Net Position' and 'Statement of Activities'. These statements provide information about the activities of the School District presenting both short-term and long-term information about the School District's overall financial status.

The fund financial statements focus on individual parts of the School District, reporting the School District's operation in more detail. The 'governmental funds' statements disclose how basic services are financed in the short-term as well as what remains for future spending. The 'fiduciary funds' statements provide information about the financial relationships in which the School District acts solely as a trustee or agent for the benefit of others. In the case of the Barrow County School District, the general fund, capital projects fund, and debt service fund are all considered to be major funds. The School District has no funds reported as nonmajor funds as defined by generally accepted accounting principles.

The financial statements also include notes that explain some of the information in the statements and provide more detailed data. The statements are followed by a section of required supplementary information that further explains and supports the financial statements. Additionally, other supplementary information (not required) is also presented that further supplements understanding of the financial statements.

BARROW COUNTY BOARD OF EDUCATION  
MANAGEMENT'S DISCUSSION AND ANALYSIS  
FOR THE FISCAL YEAR ENDED JUNE 30, 2019

### Government-wide Statements

Since Barrow County School District has no operations that have been classified as “business-type activities”, the government-wide financial statements are basically a consolidation of all of the School District’s operating funds into one column called governmental activities. In reviewing the government-wide financial statements, a reader might ask the question, are we in a better financial position now than we were last year? The ‘Statement of Net Position’ and the ‘Statement of Activities’ provides the basis for answering this question. These financial statements include all School District’s assets and liabilities and uses the accrual basis of accounting similar to the accounting used by most private-sector companies. This basis of accounting takes into account all of the current year’s revenues and expenses regardless of when cash is received or paid.

These two statements report the School District’s net position and any changes in net position. The change in net position is important because it tells the reader that, for the School District as a whole, the financial position of the School District has improved or diminished. The causes of this change may be the results of many factors, including those not under the School District’s control, such as the property tax base, facility conditions, required educational programs, student-teacher ratios, and other factors.

When analyzing government-wide financial statements, it is important to remember these statements are prepared using an economic resources measurement focus (accrual accounting) and involve the following steps to format the Statement of Net Position:

- Capitalize current outlays for capital assets.
- Depreciate capital assets.
- Report long-term debt, including pension and other post-employment benefit obligations, as a liability.
- Calculate revenue and expense using the economic resources measurement focus and the accrual basis of accounting.
- Allocate net position as follows:
  - *Net Investment in capital assets,*
  - *Restricted net position* is amounts with constraints placed on the use by external sources such as creditors, grantors, contributors or laws and regulations,
  - *Unrestricted for no specific use.*

### Fund Financial Statements

The School District uses many funds or sub-funds to account for a multitude of financial transactions during the fiscal year. The fund financial statements presented in this report provide detail information about the School District’s significant or major funds. As discussed previously, the School District has no nonmajor funds as defined by generally accepted accounting principles.

BARROW COUNTY BOARD OF EDUCATION  
MANAGEMENT'S DISCUSSION AND ANALYSIS  
FOR THE FISCAL YEAR ENDED JUNE 30, 2019

The School District has two kinds of funds as discussed below:

Governmental Funds – Most of the School District's activities are reported in governmental funds, which focus on how money flows into and out of those funds and the balances left at year-end available for spending in future periods. These funds are reported using the modified accrual method of accounting which measures cash and all other financial assets that can be readily converted to cash. The governmental fund statements provide a detailed short-term view of the School District's general government operations and the basic services it provides. Governmental fund information helps determine whether there are more or fewer financial resources that can be spent in the near future to finance educational programs. The differences between government activities (reported in the Statement of Net Position and the Statement of Activities) and governmental funds are reconciled in the financial statements.

Fiduciary Funds – The School District is the trustee, or fiduciary, for assets that belong to clubs, organizations and others within the principals' accounts. The School District is responsible for ensuring that the assets reported in these funds are used only for their intended purposes and by those to whom the assets belong. The School District excludes these activities from the government-wide financial statements because it cannot use these assets to finance its operations.

#### **NOTES TO THE FINANCIAL STATEMENTS**

The notes provide disclosures and additional information that are essential to a full understanding of the financial information presented in the government-wide and fund financial statements.

#### **OTHER INFORMATION**

In addition to the basic financial statements and accompanying notes, this report also provides certain required supplementary information and schedules.

#### **FINANCIAL ANALYSIS OF THE SCHOOL DISTRICT AS A WHOLE**

Net position, which is the difference between total assets and deferred outflows of resources, and total liabilities and deferred inflows of resources, is one indicator of the financial condition of the School District. When revenues exceed expenses, the result is an increase in net position. When expenses exceed revenues, the result is a decrease in net position. The relationship between revenues and expenses can be thought of as the School District's operating results. The School District's net position, as measured in the Statement of Net Position is one way to measure the School District's financial health, or financial position. Over time, increases or decreases in the School District's net position, as measured in the Statement of Activities, are one indicator of whether its financial health is improving or deteriorating. However, the School District's goal and mission is to provide success for each child's education, not to generate profits as private corporations do. For this reason, many other nonfinancial factors should be considered in assessing the overall health of the School District.

In the case of the Barrow County School District, liabilities and deferred inflows of resources exceeded assets and deferred outflows of resources by \$41.9 million at June 30, 2019. To better understand the School District's actual financial position and ability to deliver services in future periods, it is necessary to review the various components of the net position category. For example, of the \$41.9 million of net position (deficit), \$20.8 million was restricted for continuation of various State and Federal programs, debt service and ongoing capital projects. Accordingly, these funds were not available to meet the School District's ongoing obligations to citizens and creditors.

BARROW COUNTY BOARD OF EDUCATION  
MANAGEMENT'S DISCUSSION AND ANALYSIS  
FOR THE FISCAL YEAR ENDED JUNE 30, 2019

In addition, the School District had \$117.1 million (net of related debt) invested in capital assets (e.g., land, buildings, and equipment). The School District uses these capital assets to provide educational services to students within geographic boundaries served by the School District. Because of the very nature and on-going use of the assets being reported in this component of net position, it must be recognized that this portion of the net position is *not* available for future spending.

Because of the restrictions on net position as discussed above and because of implementation of GASB No. 68, *Accounting and Financial Reporting for Pensions*, implemented in fiscal year 2015, and GASB No. 75, *Accounting and Financial Reporting for Postemployment Benefits Other than Pensions*, implemented in fiscal year 2018, the School District had a deficit of \$179.9 million in unrestricted net position at June 30, 2019. However, the School District's overall net position can also be viewed in the following manner:

Net position June 30, 2019	\$ (41,949,192)
Pension and Postemployment Benefits related to net position	<u>206,269,377</u>
Net position (excluded pension and postemployment benefits), June 30, 2019	<u>\$ 164,320,185</u>

The above analysis reflects, removal of pension and post-employment benefits obligations (which are managed in a state run, stable fund), the School District's net position is a positive \$164.3 million and management believes the School District's financial position is sound.

BARROW COUNTY BOARD OF EDUCATION  
MANAGEMENT'S DISCUSSION AND ANALYSIS  
FOR THE FISCAL YEAR ENDED JUNE 30, 2019

Table 1 provides a summary of the School District's net position for this fiscal year as compared to the prior fiscal year.

**Table 1**  
**Net Position**

	Governmental Activities	
	Fiscal Year 2019	Fiscal Year 2018
<b>Assets</b>		
Current and Other Assets	\$ 78,364,615	\$ 74,596,187
Capital Assets, Net	<u>194,174,069</u>	<u>187,990,690</u>
<b>Total Assets</b>	272,538,684	262,586,877
<b>Deferred Outflows of Resources</b>	<u>29,617,709</u>	<u>24,115,565</u>
<b>Total Assets and Deferred Outflows of Resources</b>	<u>302,156,393</u>	<u>286,702,442</u>
<b>Liabilities</b>		
Current and Other Liabilities	26,586,392	21,437,003
Long-Term Liabilities	<u>292,148,339</u>	<u>311,084,715</u>
<b>Total Liabilities</b>	318,734,731	332,521,718
<b>Deferred Inflows of Resources</b>	<u>25,370,854</u>	<u>10,478,603</u>
<b>Total Liabilities and Deferred Inflows of Resources</b>	<u>344,105,585</u>	<u>343,000,321</u>
<b>Net Position</b>		
Net Investment in Capital Assets	117,141,476	116,337,302
Restricted	20,791,112	18,023,335
Unrestricted (Deficit)	<u>(179,881,780)</u>	<u>(190,658,516)</u>
<b>Total Net Position</b>	<u>\$ (41,949,192)</u>	<u>\$ (56,297,879)</u>

BARROW COUNTY BOARD OF EDUCATION  
MANAGEMENT'S DISCUSSION AND ANALYSIS  
FOR THE FISCAL YEAR ENDED JUNE 30, 2019

Total net position increased \$14.3 million in fiscal year 2019 from the prior year. In connection with GASB No. 68, accounting standards for pensions, and GASB No. 75 accounting for other post-employment benefits, management presents the following additional information:

Total unrestricted net position (deficit)	\$ (179,881,780)
Less:	
Unrestricted deficit in net position resulting from recognition of net pension obligations and other post-employment benefits	<u>206,269,377</u>
Unrestricted net position, exclusive of the net pension liability and net OPEB liability effect	<u>\$ 26,387,597</u>

BARROW COUNTY BOARD OF EDUCATION  
MANAGEMENT'S DISCUSSION AND ANALYSIS  
FOR THE FISCAL YEAR ENDED JUNE 30, 2019

Table 2 provides a summary of the School District's net position for this fiscal year as compared to the prior fiscal year.

**Table 2**  
**Change in Net Position**

	Governmental Activities	
	Fiscal Year 2019	Fiscal Year 2018
<b>Revenues</b>		
Program Revenues:		
Charges for Services	\$ 3,540,587	\$ 3,510,787
Operating Grants and Contributions	92,865,106	89,295,710
Capital Grants and Contributions	356,127	636,217
Total Program Revenues	96,761,820	93,442,714
General Revenues:		
Property Taxes	41,928,689	37,156,406
Sales Taxes	13,009,467	12,029,396
Grants and Contributions not Restricted to Specific Programs	6,736,326	7,811,896
Investment Earnings	1,172,440	514,214
Miscellaneous	2,110,670	1,619,418
Total General Revenues	64,957,592	59,131,330
Special Item:		
Donations	947,684	1,377,000
Total Revenues	162,667,096	153,951,044
<b>Program Expenses</b>		
Instruction	89,790,518	91,528,061
Support Services		
Pupil Services	4,927,022	4,232,319
Improvement of Instructional Services	6,202,926	6,536,349
Educational Media Services	1,982,530	2,011,939
General Administration	1,485,921	1,531,918
School Administration	7,504,848	7,753,756
Business Administration	2,151,879	2,280,443
Maintenance and Operation of Plant	10,016,090	9,184,221
Student Transportation Services	9,371,470	8,626,029
Central Support Services	970,966	760,912
Other Support Services	13,900	9,949
Operations of Non-Instructional Services		
Enterprise Operations	2,893,945	2,752,403
Food Services	8,438,761	8,239,529
Interest on Short-Term and Long-Term Debt	2,567,633	2,732,432
Total Expenses	148,318,409	148,180,260
Increase in Net Position	\$ 14,348,687	\$ 5,770,784



BARROW COUNTY BOARD OF EDUCATION  
MANAGEMENT'S DISCUSSION AND ANALYSIS  
FOR THE FISCAL YEAR ENDED JUNE 30, 2019

The Statement of Activities shows the cost of program services and the charges for services and grants offsetting these services. Table 3 shows, for governmental activities, the total cost of services and the net cost of services. Net cost of services can be defined as the total cost less fees generated by the activities and intergovernmental revenue provided for specific programs. The net cost reflects the financial burden on the School District's taxpayers by each activity as compared to the prior fiscal year.

Instruction comprises 60.5% of governmental program expenses. Support services expenses make up 30.1% of the expenses. Expenses increased about \$138.1 thousand from the prior year, while the net costs of providing services decreased about \$3.2 million.

**Table 3**  
**Governmental Activities**

	Total Cost of Services		Net Cost of Services	
	Fiscal Year 2019	Fiscal Year 2018	Fiscal Year 2019	Fiscal Year 2018
Instruction	\$ 89,790,518	\$ 91,528,061	\$ 22,344,209	\$ 26,410,567
Support Services				
Pupil Services	4,927,022	4,232,319	4,083,115	3,528,325
Improvement of Instructional Services	6,202,926	6,536,349	2,276,196	2,489,155
Educational Media Services	1,982,530	2,011,939	127,072	208,333
General Administration	1,485,921	1,531,918	(808,073)	(809,932)
School Administration	7,504,848	7,753,756	3,950,271	4,378,646
Business Administration	2,151,879	2,280,443	2,139,711	2,274,490
Maintenance and Operation of Plant	10,016,090	9,184,221	5,576,407	4,950,020
Student Transportation Services	9,371,470	8,626,029	7,661,321	7,354,868
Central Support Services	970,966	760,912	957,435	753,993
Other Support Services	13,900	9,949	191	(2,124)
Operations of Non-Instructional Services				
Enterprise Operations	2,893,945	2,752,403	748,431	457,372
Food Services	8,438,761	8,239,529	(67,331)	11,401
Interest on Short-Term and Long-Term Debt	2,567,633	2,732,432	2,567,633	2,732,432
Total Expenses	\$ <u>148,318,409</u>	\$ <u>148,180,260</u>	\$ <u>51,556,588</u>	\$ <u>54,737,546</u>

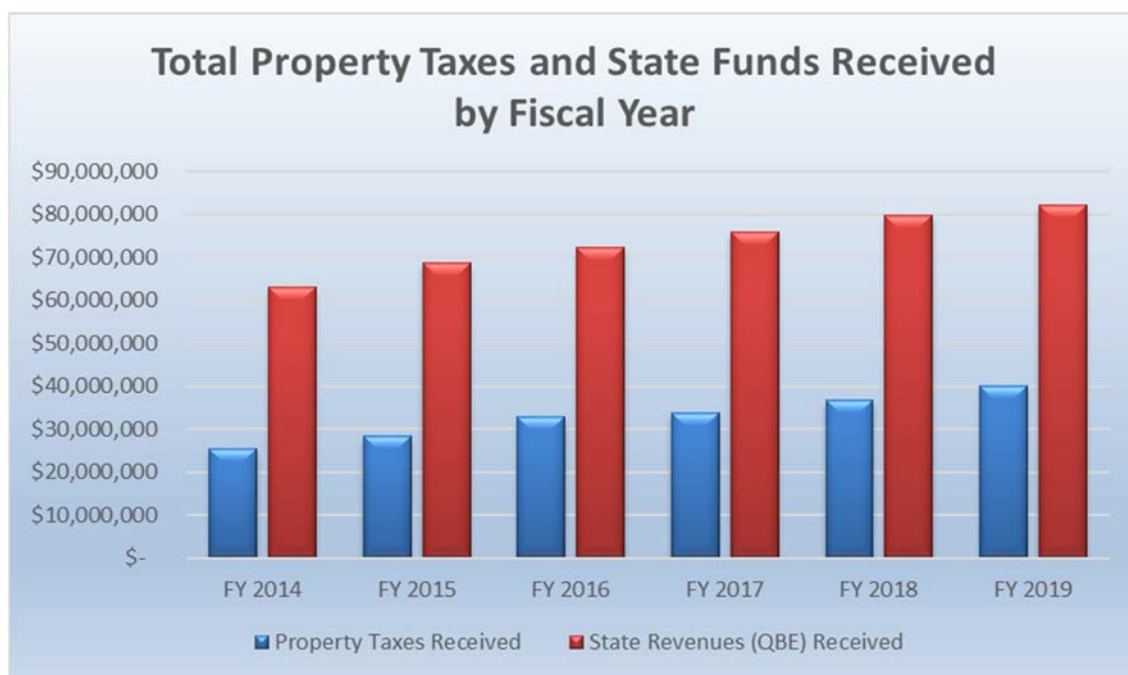
## FINANCIAL ANALYSIS OF THE SCHOOL DISTRICT'S FUNDS

Information about the School District's governmental funds is presented starting on Exhibit "C" of this report. Governmental funds are accounted for using the modified accrual basis of accounting. The governmental funds had total revenues of over \$161.1 million and total expenditures of nearly \$164.7 million in fiscal year 2019. Total governmental fund balances of \$50.5 million at June 30, 2019, decreased nearly \$2.0 million from the prior year. This decrease in fund balance resulted from the net of \$6.8 million increases in fund balance of the general and debt service fund and a \$8.8 million decrease in fund balance of the capital projects fund. Capital projects fund balance decreased due to construction costs of the new high school and renovations of other buildings which used the accumulated fund balance from prior years. The general and debt service fund increased due to additional state and local funds. Property taxes increased by almost \$4.7 million and State funds increased by approximately \$858 thousand. The main increase in expenditures was

BARROW COUNTY BOARD OF EDUCATION  
MANAGEMENT'S DISCUSSION AND ANALYSIS  
FOR THE FISCAL YEAR ENDED JUNE 30, 2019

salaries (\$2.7 million) and TRS pension cost (\$3.4 million). Capital projects fund reserves decreased by \$8.8 million during the fiscal year due to additional construction costs. The general fund had an increase of \$6.3 million during fiscal year 2019.

Shown here is an illustration of property tax and state funds received in the past 6 years:



### General Fund Budget Highlights

The School District's budget is prepared according to Georgia Law. The most significant budgeted fund is the general fund. During the course of fiscal year 2019, the School District amended its general fund budget as needed.

The School District budget is adopted at the aggregate level and maintained at the program, function, object, and site levels to facilitate budgetary control. The budgeting systems are designed to control the total budget but provide flexibility to meet the ongoing programmatic needs. The budgeting systems are also designed to control total site budgets but provide flexibility for site management as well.

For the general fund, the final actual revenues of \$148.7 million exceeded the final budgeted revenues of \$143.0 million by \$5.7 million. The variance was primarily due to property taxes coming in higher than projected. In addition, revenues for school activity accounts (approximately \$4.2 million) were included as a part of the general fund financial statements, even though school activity accounts are not required by the School District to have a formal budget.

The general fund's final budgeted expenditures of \$145.3 million exceeded actual expenditures of almost \$142.4 million by roughly \$2.9 million due to salaries and health insurance coming in lower than projected, conservative management of funds, and a desire to increase fund balance to a more appropriate level.

BARROW COUNTY BOARD OF EDUCATION  
MANAGEMENT'S DISCUSSION AND ANALYSIS  
FOR THE FISCAL YEAR ENDED JUNE 30, 2019

**CAPITAL ASSETS AND DEBT ADMINISTRATION**

**Capital Assets**

At fiscal year ended June 30, 2019, the School District had \$194.2 million invested in capital assets, net of accumulated depreciation, all in governmental activities. These assets are made up of a broad range of items including buildings; land; land improvements; and food service, transportation and maintenance equipment. Table 4 reflects a summary of these balances, net of accumulated depreciation, as compared to the prior fiscal year.

**Table 4**  
**Capital Assets at June 30**  
**(Net of Depreciation)**

	Governmental Activities	
	Fiscal Year 2019	Fiscal Year 2018
Land	\$ 5,400,605	\$ 5,400,605
Construction In Progress	9,519,709	22,360
Land Improvements	801,496	850,860
Building and Improvements	172,599,974	176,853,681
Equipment	5,852,285	4,863,184
Total	<u>\$ 194,174,069</u>	<u>\$ 187,990,690</u>

The overall capital assets increased in fiscal year 2019 by \$6.2 million. Depreciation expenses reduced the total capital assets by \$5.7 million. The School District initiated construction on the new high school and other renovation projects, purchased buses and had facility improvements all adding to the total capital assets balance. Additional information about the School District's capital assets can be found in the Notes to the Basic Financial Statements.

**Long-Term Debt**

At June 30, 2019, the School District had \$81.9 million in total debt outstanding which consisted of \$74.9 million in bond debt, \$664 thousand in financed purchases, \$563 thousand in capital leases, \$162 thousand in revenue bonds, \$492 thousand in compensated absences debt, and \$5.2 million in unamortized bond premiums. Table 5 summarizes the School District's debt as compared to the prior fiscal year.

**Table 5**  
**Debt at June 30**

	Governmental Activities	
	Fiscal Year 2019	Fiscal Year 2018
Bonds Payable	\$ 74,865,000	\$ 80,060,000
Financed Purchases	663,780	752,889
Capital Leases	562,667	-
Revenue Bonds	161,542	240,380
Compensated Absences	492,201	448,744
Unamortized Bond Premiums	5,177,827	5,743,288
Total	<u>\$ 81,923,017</u>	<u>\$ 87,245,301</u>

Additional information about the School District's debt can be found in the Notes to the Basic Financial Statements.

BARROW COUNTY BOARD OF EDUCATION  
MANAGEMENT'S DISCUSSION AND ANALYSIS  
FOR THE FISCAL YEAR ENDED JUNE 30, 2019

**FACTORS BEARING ON THE SCHOOL DISTRICT'S FUTURE**

Currently known circumstances that are expected to have a significant effect on financial position or results of operations in future years are as follows:

- The School District is financially stable, and the economy continues to improve. General fund revenues from the State of Georgia increased 2.68% from the prior year and property tax revenues showed an increase of 12.66% from the prior year. The School District's operating millage for fiscal year 2019 was 18.50, which produced approximately \$2.2 million in tax revenue per mill. The gross tax digest has grown at 32.7% over the last five years, which has helped to increase our fund balances to a comfortable level. The general fund had an unassigned fund balance of \$24.2 million at June 30, 2019, which is an increase of about \$6.1 million from the prior year. This increase in general fund balance was primarily attributable to these increased revenues. The School District will attempt to maintain adequate balances to shield the School District from the adverse effect of economic fluctuations.
- The School District continues to grow with an average increase of over 200 students per year over the last 5 years. The School District is currently constructing a new high school and in fiscal year 2020 will break ground on an expansion of Westside Middle School to accommodate for growth. The School District plans to fund the additional capital outlays with the one percent local sales tax revenue, general obligation bonds, and state capital outlay grants.
- In fiscal year 2020, the cost of the employer portion of TRS pension increased from 20.9% of employee salary to 21.14% resulting in an additional \$3.5 million of contributions. Health insurance premiums for certified and non-certified employees is expected to be stable at \$945 per employee per month. In spite of these hardships, the School District plans to add numerous teaching positions due to growth and add additional support positions for our teachers.
- Property taxes should increase due to reassessments, new residential housing projects and a rise in commercial construction.

In light of these challenges and opportunities, the School District will continue to be a good steward of tax dollars while providing a quality educational opportunity.

**CONTACTING THE SCHOOL DISTRICT'S FINANCIAL MANAGEMENT**

This financial report is designed to provide our citizens, taxpayers, investors and creditors with a general overview of the School District's finances and to show the School District's accountability for the money it receives. If you have questions about this report or need additional financial information, please contact Ms. Jennifer Houston, CPA, Assistant Superintendent for Business Services, Barrow County Board of Education, 179 West Athens Street, Winder, Georgia, 30680. You may also email your questions to Ms. Houston at [Jennifer.Houston@barrow.k12.ga.us](mailto:Jennifer.Houston@barrow.k12.ga.us).

BARROW COUNTY BOARD OF EDUCATION

BARROW COUNTY BOARD OF EDUCATION  
STATEMENT OF NET POSITION  
JUNE 30, 2019

EXHIBIT "A"

	<u>GOVERNMENTAL ACTIVITIES</u>
<u>ASSETS</u>	
Cash and Cash Equivalents	\$ 61,135,039.94
Investments	54,868.68
Receivables, Net	
Interest	45,148.44
Taxes	4,178,284.53
State Government	11,204,983.83
Federal Government	1,246,598.16
Other	346,228.30
Inventories	64,687.35
Prepaid Items	1,250.00
Restricted Assets	
Investments with Fiscal Agent or Trustee	87,526.13
Capital Assets, Non-Depreciable	14,920,313.61
Capital Assets, Depreciable (Net of Accumulated Depreciation)	<u>179,253,755.30</u>
Total Assets	<u>272,538,684.27</u>
<u>DEFERRED OUTFLOWS OF RESOURCES</u>	
Deferred Charge on Debt Refunding	290,910.52
Related to Defined Benefit Pension Plans	24,993,148.99
Related to OPEB Plan	<u>4,333,649.00</u>
Total Deferred Outflows of Resources	<u>29,617,708.51</u>
<u>LIABILITIES</u>	
Accounts Payable	249,141.16
Salaries and Benefits Payable	15,929,337.50
Payroll Withholdings Payable	3,697,728.76
Interest Payable	1,209,701.59
Contracts Payable	4,703,587.54
Retainages Payable	796,895.72
Net Pension Liability	110,474,312.00
Net OPEB Liability	99,751,009.00
Long-Term Liabilities	
Due Within One Year	6,265,170.97
Due in More Than One Year	<u>75,657,846.86</u>
Total Liabilities	<u>318,734,731.10</u>
<u>DEFERRED INFLOWS OF RESOURCES</u>	
Related to Defined Benefit Pension Plans	5,229,783.00
Related to OPEB Plan	<u>20,141,071.00</u>
Total Deferred Inflows of Resources	<u>25,370,854.00</u>
<u>NET POSITION</u>	
Net Investment in Capital Assets	117,141,476.39
Restricted for	
Continuation of Federal Programs	2,531,127.45
Debt Service	3,823,527.04
Capital Projects	14,436,457.21
Unrestricted (Deficit)	<u>(179,881,780.41)</u>
Total Net Position	<u>\$ (41,949,192.32)</u>

BARROW COUNTY BOARD OF EDUCATION  
STATEMENT OF ACTIVITIES  
FOR THE YEAR ENDED JUNE 30, 2019

	EXPENSES	CHARGES FOR SERVICES
<u>GOVERNMENTAL ACTIVITIES</u>		
Instruction	\$ 89,790,518.22	\$ -
Support Services		
Pupil Services	4,927,022.19	-
Improvement of Instructional Services	6,202,926.41	-
Educational Media Services	1,982,529.56	-
General Administration	1,485,921.40	-
School Administration	7,504,848.36	-
Business Administration	2,151,878.49	-
Maintenance and Operation of Plant	10,016,089.62	84,584.08
Student Transportation Services	9,371,470.44	-
Central Support Services	970,965.84	-
Other Support Services	13,899.74	-
Operations of Non-Instructional Services		
Enterprise Operations	2,893,944.49	2,144,872.71
Food Services	8,438,760.96	1,311,130.23
Interest on Short-Term and Long-Term Debt	2,567,633.21	-
Total Governmental Activities	<u>\$ 148,318,408.93</u>	<u>\$ 3,540,587.02</u>
General Revenues		
Taxes		
Property Taxes		
For Maintenance and Operations		
For Debt Services		
Railroad Cars		
Sales Taxes		
Special Purpose Local Option Sales Tax		
For Capital Projects		
Other Sales Tax		
Grants and Contributions not Restricted to Specific Programs		
Investment Earnings		
Miscellaneous		
Special Item		
Contribution from Barrow County for Athletic Field Projects		
Total General Revenues and Special Item		
Change in Net Position		
Net Position - Beginning of Year		
Net Position - End of Year		

## EXHIBIT "B"

PROGRAM REVENUES		NET (EXPENSES)	
OPERATING GRANTS AND CONTRIBUTIONS	CAPITAL GRANTS AND CONTRIBUTIONS	REVENUES AND CHANGES IN NET POSITION	
\$ 67,405,304.77	\$ 41,004.60	\$	(22,344,208.85)
843,334.31	573.08		(4,083,114.80)
3,926,152.54	577.90		(2,276,195.97)
1,855,449.00	8.83		(127,071.73)
2,293,759.75	234.22		808,072.57
3,554,577.01	-		(3,950,271.35)
12,115.27	52.04		(2,139,711.18)
4,352,042.65	3,055.83		(5,576,407.06)
1,401,269.58	308,880.00		(7,661,320.86)
13,367.12	163.31		(957,435.41)
13,708.95	-		(190.79)
-	641.03		(748,430.75)
7,194,025.27	936.33		67,330.87
-	-		(2,567,633.21)
<u>\$ 92,865,106.22</u>	<u>\$ 356,127.17</u>		<u>(51,556,588.52)</u>
			41,909,807.54
			344.37
			18,536.58
			11,788,492.24
			1,220,975.16
			6,736,326.00
			1,172,440.23
			2,110,669.60
			<u>947,683.68</u>
			<u>65,905,275.40</u>
			14,348,686.88
			<u>(56,297,879.20)</u>
		\$	<u>(41,949,192.32)</u>



BARROW COUNTY BOARD OF EDUCATION  
BALANCE SHEET  
GOVERNMENTAL FUNDS  
JUNE 30, 2019

EXHIBIT "C"

	GENERAL FUND	CAPITAL PROJECTS FUND	DEBT SERVICE FUND	TOTAL
<u>ASSETS</u>				
Cash and Cash Equivalents	\$ 34,458,326.63	\$ 21,661,488.62	\$ 5,015,224.69	\$ 61,135,039.94
Investments	54,868.68	-	-	54,868.68
Receivables, Net				
Interest	-	37,044.53	8,103.91	45,148.44
Taxes	3,144,792.52	1,023,591.98	9,900.03	4,178,284.53
State Government	11,204,983.83	-	-	11,204,983.83
Federal Government	1,246,598.16	-	-	1,246,598.16
Other	346,228.30	-	-	346,228.30
Due from Other Funds	-	371.46	-	371.46
Inventories	64,687.35	-	-	64,687.35
Prepaid Items	1,250.00	-	-	1,250.00
Restricted				
Cash and Investments with a Fiscal Agent or Trustee	-	87,526.13	-	87,526.13
 Total Assets	 \$ 50,521,735.47	 \$ 22,810,022.72	 \$ 5,033,228.63	 \$ 78,364,986.82
<u>LIABILITIES</u>				
Accounts Payable	\$ 169,399.32	\$ 79,741.84	\$ -	\$ 249,141.16
Salaries and Benefits Payable	15,929,337.50	-	-	15,929,337.50
Payroll Withholdings Payable	3,697,728.76	-	-	3,697,728.76
Due to Other Funds	371.46	-	-	371.46
Contracts Payable	-	4,703,587.54	-	4,703,587.54
Retainages Payable	-	796,895.72	-	796,895.72
 Total Liabilities	 19,796,837.04	 5,580,225.10	 -	 25,377,062.14
<u>DEFERRED INFLOWS OF RESOURCES</u>				
Unavailable Revenue - Property Taxes	2,495,986.45	-	9,900.03	2,505,886.48
<u>FUND BALANCES</u>				
Nonspendable	65,937.35	-	-	65,937.35
Restricted	2,466,440.10	17,229,797.62	5,023,328.60	24,719,566.32
Assigned	1,525,617.29	-	-	1,525,617.29
Unassigned	24,170,917.24	-	-	24,170,917.24
 Total Fund Balances	 28,228,911.98	 17,229,797.62	 5,023,328.60	 50,482,038.20
 Total Liabilities, Deferred Inflows of Resources, and Fund Balances	 \$ 50,521,735.47	 \$ 22,810,022.72	 \$ 5,033,228.63	 \$ 78,364,986.82

BARROW COUNTY BOARD OF EDUCATION  
RECONCILIATION OF THE GOVERNMENTAL FUNDS BALANCE SHEET  
TO THE STATEMENT OF NET POSITION  
JUNE 30, 2019

EXHIBIT "D"

Total fund balances - governmental funds (Exhibit "C")	\$	50,482,038.20
--	----	---------------

Amounts reported for governmental activities in the Statement of Net Position are different because:

Capital assets used in governmental activities are not financial resources and therefore are not reported in the funds.

Land	\$	5,400,604.82	
Construction in progress		9,519,708.79	
Buildings and improvements		225,578,326.27	
Equipment		23,924,913.85	
Land improvements		3,643,237.17	
Accumulated depreciation		<u>(73,892,721.99)</u>	194,174,068.91

Some liabilities are not due and payable in the current period and, therefore, are not reported in the funds.

Net pension liability	\$	(110,474,312.00)	
Net OPEB liability		<u>(99,751,009.00)</u>	(210,225,321.00)

Deferred charges or credits on debt refundings are applicable to future periods and are therefore not reported in the funds and are amortized over the life of the new debt.	290,910.52
--	------------

Deferred outflows and inflows of resources related to pensions/OPEB are applicable to future periods and, therefore, are not reported in the funds.

Related to pensions	\$	19,763,365.99	
Related to OPEB		<u>(15,807,422.00)</u>	3,955,943.99

Taxes that are not available to pay for current period expenditures are deferred in the funds.	2,505,886.48
--	--------------

Long-term liabilities, and related accrued interest, are not due and payable in the current period and therefore are not reported in the funds.

Bonds payable	\$	(74,865,000.00)	
Accrued interest payable		(1,209,701.59)	
Capital leases payable		(562,667.00)	
Compensated absences payable		(492,201.40)	
Unamortized bond premiums		(5,177,827.30)	
Financed purchases		(663,779.85)	
Revenue bonds		<u>(161,542.28)</u>	(83,132,719.42)

Net position of governmental activities (Exhibit "A")	\$	<u>(41,949,192.32)</u>
---	----	------------------------

BARROW COUNTY BOARD OF EDUCATION  
STATEMENT OF REVENUES, EXPENDITURES AND CHANGES IN FUND BALANCES  
YEAR ENDED JUNE 30, 2019

EXHIBIT "E"

	GENERAL FUND	CAPITAL PROJECTS FUND	DEBT SERVICE FUND	TOTAL
<b>REVENUES</b>				
Property Taxes	\$ 41,387,868.55	\$ -	\$ -	\$ 41,387,868.55
Sales Taxes	1,220,975.16	11,788,492.24	-	13,009,467.40
State Funds	86,278,910.30	-	-	86,278,910.30
Federal Funds	13,611,292.12	-	-	13,611,292.12
Charges for Services	3,540,587.02	-	-	3,540,587.02
Investment Earnings	554,931.45	518,568.18	98,940.60	1,172,440.23
Miscellaneous	2,110,669.60	-	-	2,110,669.60
Total Revenues	148,705,234.20	12,307,060.42	98,940.60	161,111,235.22
<b>EXPENDITURES</b>				
Current				
Instruction	87,781,166.23	1,368,711.78	-	89,149,878.01
Support Services				
Pupil Services	5,010,785.95	-	-	5,010,785.95
Improvement of Instructional Services	6,494,064.01	11,322.00	-	6,505,386.01
Educational Media Services	2,053,915.80	-	-	2,053,915.80
General Administration	1,042,934.62	418,204.74	-	1,461,139.36
School Administration	7,803,591.85	-	-	7,803,591.85
Business Administration	2,171,941.79	-	-	2,171,941.79
Maintenance and Operation of Plant	9,368,100.54	319,207.93	-	9,687,308.47
Student Transportation Services	8,218,118.48	2,099,684.80	-	10,317,803.28
Central Support Services	978,329.10	-	-	978,329.10
Other Support Services	13,899.74	-	-	13,899.74
Enterprise Operations	2,817,150.37	-	-	2,817,150.37
Food Services Operation	8,632,431.79	-	-	8,632,431.79
Capital Outlay	-	9,540,733.76	-	9,540,733.76
Debt Services				
Principal	-	216,212.13	5,195,000.00	5,411,212.13
Interest	-	27,982.80	3,086,115.00	3,114,097.80
Total Expenditures	142,386,430.27	14,002,059.94	8,281,115.00	164,669,605.21
Revenues over (under) Expenditures	6,318,803.93	(1,694,999.52)	(8,182,174.40)	(3,558,369.99)
<b>OTHER FINANCING SOURCES (USES)</b>				
Capital Leases	-	610,932.00	-	610,932.00
Transfers In	-	-	8,629,184.48	8,629,184.48
Transfers Out	-	(8,629,184.48)	-	(8,629,184.48)
Total Other Financing Sources (Uses)	-	(8,018,252.48)	8,629,184.48	610,932.00
<b>SPECIAL ITEM</b>				
Contribution from Barrow County for Athletic Field Projects	-	947,683.68	-	947,683.68
Net Change in Fund Balances	6,318,803.93	(8,765,568.32)	447,010.08	(1,999,754.31)
Fund Balances - Beginning	21,910,108.05	25,995,365.94	4,576,318.52	52,481,792.51
Fund Balances - Ending	\$ 28,228,911.98	\$ 17,229,797.62	\$ 5,023,328.60	\$ 50,482,038.20

BARROW COUNTY BOARD OF EDUCATION  
RECONCILIATION OF THE GOVERNMENTAL FUNDS STATEMENT OF  
REVENUES, EXPENDITURES AND CHANGES IN FUND BALANCES  
TO THE STATEMENT OF ACTIVITIES  
JUNE 30, 2019

EXHIBIT "F"

Net change in fund balances total governmental funds (Exhibit "E") \$ (1,999,754.31)

Amounts reported for governmental activities in the Statement of Activities are different because:

Governmental funds report capital outlays as expenditures. However, in the Statement of Activities, the cost of capital assets is allocated over their estimated useful lives as depreciation expense.

Capital outlay	\$ 11,852,998.70	
Depreciation expense	(5,669,619.87)	6,183,378.83

Taxes reported in the Statement of Activities that do not provide current financial resources are not reported as revenues in the funds.	540,819.94
--	------------

The issuance of long-term debt provides current financial resources to governmental funds, while the repayment of the principal of long-term debt consumes the current financial resources of governmental funds. Neither transaction, however, has any effect on net position. Also, governmental funds report the effect of premiums, discounts and the difference between the carrying value of refunded debt and the acquisition cost of refunded debt when debt is first issued. These amounts are deferred and amortized in the Statement of Activities.

Capital leases issued	\$ (610,932.00)	
Deferral of loss on refunding bonds	(96,970.18)	
Amortization of bond premiums	565,460.96	
Bond principal retirements	5,195,000.00	
Capital lease payments	48,265.00	
Revenue bond payments	78,837.62	
Financed purchases	89,109.51	5,268,770.91

District pension contributions are reported as expenditures in the governmental funds when made. However, they are reported as deferred outflows of resources in the Statement of Net Position because the reported net pension/OPEB liability is measured a year before the District's report date. Pension/OPEB expense, which is the change in the net pension/OPEB liability adjusted for changes in deferred outflows and inflows of resources related to pensions/OPEB, is reported in the Statement of Activities.

Pension expense	\$ 4,144,710.61	
OPEB expense	176,245.00	4,320,955.61

Some items reported in the Statement of Activities do not require the use of current financial resources and therefore are not reported as expenditures in governmental funds.

Accrued interest on issuance of bonds	\$ 77,973.81	
Compensated absences	(43,457.91)	34,515.90

Change in net position of governmental activities (Exhibit "B") \$ 14,348,686.88

BARROW COUNTY BOARD OF EDUCATION  
STATEMENT OF FIDUCIARY NET POSITION  
FIDUCIARY FUNDS  
JUNE 30, 2019

EXHIBIT "G"

	AGENCY FUNDS
	<hr/>
<u>ASSETS</u>	
Cash and Cash Equivalents	\$ <u>283,571.80</u>
<u>LIABILITIES</u>	
Funds Held for Others	\$ <u>283,571.80</u>

(This page left intentionally blank)

## **NOTE 1: DESCRIPTION OF SCHOOL DISTRICT AND REPORTING ENTITY**

### **REPORTING ENTITY**

The Barrow County Board of Education (School District) was established under the laws of the State of Georgia and operates under the guidance of a board elected by the voters and a Superintendent appointed by the Board. The School District is organized as a separate legal entity and has the power to levy taxes and issue bonds. Its budget is not subject to approval by any other entity. Accordingly, the School District is a primary government and consists of all the organizations that compose its legal entity.

## **NOTE 2: SUMMARY OF SIGNIFICANT ACCOUNTING POLICIES**

The accompanying financial statements of the School District have been prepared in conformity with generally accepted accounting principles (GAAP) as prescribed by the Governmental Accounting Standards Board (GASB). GASB is the accepted standard-setting body for governmental accounting and financial reporting principles. The most significant of the School District's accounting policies are described below.

### **BASIS OF PRESENTATION**

The School District's basic financial statements are collectively comprised of the government-wide financial statements, fund financial statements and notes to the basic financial statements. The government-wide statements focus on the School District as a whole, while the fund financial statements focus on major funds. Each presentation provides valuable information that can be analyzed and compared between years and between governments to enhance the information's usefulness.

### **GOVERNMENT-WIDE STATEMENTS:**

The Statement of Net Position and the Statement of Activities display information about the financial activities of the overall School District, except for fiduciary activities. Eliminations have been made to minimize the double counting of internal activities. Governmental activities generally are financed through taxes, intergovernmental revenues, and other nonexchange transactions.

The Statement of Net Position presents the School District's non-fiduciary assets and liabilities, with the difference reported as net position. Net position is reported in three categories as follows:

1. **Net investment in capital assets** consists of the School District's total investment in capital assets, net of accumulated depreciation, and reduced by outstanding debt obligations related to those capital assets. To the extent debt has been incurred but not yet expended for capital assets, such amounts are not included as a component of net investment in capital assets.
2. **Restricted net position** consists of resources for which the School District is legally or contractually obligated to spend in accordance with restrictions imposed by external third parties or imposed by law through constitutional provisions or enabling legislation.
3. **Unrestricted net position** consists of resources not meeting the definition of the two preceding categories. Unrestricted net position often has constraints on resources imposed by management which can be removed or modified.

The Statement of Activities presents a comparison between direct expenses and program revenues for each function of the School District's governmental activities.

Direct expenses are those that are specifically associated with a program or function and, therefore, are clearly identifiable to a particular function. Indirect expenses (expenses of the School District related to the administration and support of the School District's programs, such as office and maintenance personnel and accounting) are not allocated to programs.

Program revenues include (a) charges paid by the recipients of goods or services offered by the programs and (b) grants and contributions that are restricted to meeting the operational or capital requirements of a particular program. Revenues that are not classified as program revenues, including all taxes, are presented as general revenues.

#### **FUND FINANCIAL STATEMENTS:**

The fund financial statements provide information about the School District's funds, including fiduciary funds. Eliminations have been made to minimize the double counting of internal activities. Separate financial statements are presented for governmental and fiduciary funds. The emphasis of fund financial statements is on major governmental funds, each displayed in a separate column.

The School District reports the following major governmental funds:

- The general fund is the School District's primary operating fund. It accounts for and reports all financial resources not accounted for and reported in another fund.
- The capital projects fund accounts for and reports financial resources including Education Special Purpose Local Option Sales Tax (ESPLOST), bond proceeds and grants from Georgia State Financing and Investment Commission that are restricted, committed or assigned for capital outlay expenditures, including the acquisition or construction of capital facilities and other capital assets.
- The debt service fund accounts for and reports financial resources that are restricted, committed, or assigned including taxes (property and sales) legally restricted for the payment of general long-term principal and interest.

The School District reports the following fiduciary fund type:

- Agency funds are used to report resources held by the School District in a purely custodial capacity (assets equal liabilities) and do not involve measurement of results of operations.

#### **BASIS OF ACCOUNTING**

The basis of accounting determines when transactions are reported on the financial statements. The government-wide and fiduciary fund financial statements are reported using the economic resources measurement focus and the accrual basis of accounting. Revenues are recorded when earned and expenses are recorded at the time liabilities are incurred, regardless of when the related cash flows take place. Nonexchange transactions, in which the School District gives (or receives) value without directly receiving (or giving) equal value in exchange, include property taxes, sales taxes and grants. On an accrual basis, revenue from property taxes is recognized in the fiscal year for which the taxes are levied. Revenue from sales taxes is recognized in the fiscal year in which the underlying transaction (sale) takes place. Revenue from grants is recognized in the fiscal year in which all eligibility requirements have been satisfied.

The School District uses funds to report on its financial position and the results of its operations. Fund accounting is designed to demonstrate legal compliance and to aid financial management by segregating transactions related to certain governmental functions or activities. A fund is a separate accounting entity with a self-balancing set of accounts.

Governmental funds are reported using the current financial resources measurement focus and the modified accrual basis of accounting. Under this method, revenues are recognized when measurable and available. The School District considers all revenues reported in the governmental funds to be available if they are collected within sixty days after year-end. The School District considers all intergovernmental revenues to be available if they are collected within 60 days after year-end. Property taxes, sales taxes and interest are considered to be susceptible to accrual. Expenditures are recorded when the related fund liability is incurred, except for principal and interest on general long-term debt and compensated absences, which are recognized as expenditures to the extent they have matured.



Capital asset acquisitions are reported as expenditures in governmental funds. Proceeds of general long-term liabilities and acquisitions under capital leases are reported as other financing sources.

The School District funds certain programs by a combination of specific cost-reimbursement grants, categorical grants, and general revenues. Thus, when program costs are incurred, there are both restricted and unrestricted net assets available to finance the program. It is the School District's policy to first apply grant resources to such programs, followed by cost-reimbursement grants, then general revenues.

#### NEW ACCOUNTING PRONOUNCEMENTS

In fiscal year 2019, the School District adopted Governmental Accounting Standards Board (GASB) Statement No. 83, *Certain Asset Retirement Obligations*. This statement addresses accounting and financial reporting for certain asset retirement obligations (AROs). An ARO is a legally enforceable liability associated with the retirement of a tangible capital asset. A government that has legal obligations to perform future asset retirement activities related to its tangible capital assets should recognize a liability based on the guidance in this statement. The adoption of this statement did not have an impact on the School District's financial statements.

In fiscal year 2019, the School District adopted Governmental Accounting Standards Board (GASB) Statement No. 88, *Certain Disclosures Related to Debt, including Direct Borrowings and Direct Placements*. The primary objective of this statement is to improve the information that is disclosed in notes to government financial statements related to debt, including direct borrowings and direct placements. It also clarifies which liabilities governments should include when disclosing information related to debt. The School District included additional information in the Long-term Liabilities note disclosure.

#### CASH AND CASH EQUIVALENTS

Cash and cash equivalents consist of cash on hand, demand deposits, investments in the State of Georgia local government investment pool (Georgia Fund 1) and short-term investments with original maturities of three months or less from the date of acquisition in authorized financial institutions. Official Code of Georgia Annotated (O.C.G.A.) §45-8-14 authorizes the School District to deposit its funds in one or more solvent banks, insured Federal savings and loan associations or insured chartered building and loan associations.

#### INVESTMENTS

The School District can invest its funds as permitted by O.C.G.A. §36-83-4. In selecting among options for investment or among institutional bids for deposits, the highest rate of return shall be the objective, given equivalent conditions of safety and liquidity.

Investments made by the School District in nonparticipating interest-earning contracts (such as certificates of deposit) and repurchase agreements are reported at cost. Participating interest-earning contracts and money market investments with a maturity at purchase of one year or less are reported at amortized cost. All other investments are reported at fair value.

For accounting purposes, certificates of deposit are classified as investments if they have an original maturity greater than three months when acquired.

#### RECEIVABLES

Receivables consist of amounts due from property and sales taxes, grant reimbursements due on Federal, State or other grants for expenditures made but not reimbursed and other receivables disclosed from information available. Receivables are recorded when either the asset or revenue recognition criteria has been met. Receivables recorded on the basic financial statements do not include any amounts which would necessitate the need for an allowance for uncollectible receivables.

Due to other funds and due from other funds consist of activities between funds that are representative of lending/borrowing arrangements outstanding at the end of the fiscal year.

## INVENTORIES

### Food Inventories

On the basic financial statements, inventories of donated food commodities used in the preparation of meals are reported at their Federally assigned value and purchased foods inventories are reported at cost (calculated on the first-in, first-out basis). The School District uses the consumption method to account for inventories whereby donated food commodities are recorded as an asset and as revenue when received, and expenses/expenditures are recorded as the inventory items are used. Purchased foods are recorded as an asset when purchased and expenses/expenditures are recorded as the inventory items are used.

## PREPAID ITEMS

Payments made to vendors for services that will benefit future accounting periods are recorded as prepaid items, in both the government-wide and governmental fund financial statements.

## RESTRICTED ASSETS

Certain resources set aside for repayment of debt are classified as restricted assets on the Statement of net position because their use is limited by applicable debt statutes, e.g. Rutland Center revenue bonds.

## CAPITAL ASSETS

On the government-wide financial statements, capital assets are recorded at cost where historical records are available and at estimated historical cost based on appraisals or deflated current replacement cost where no historical records exist. Donated capital assets are recorded at the acquisition value on the date donated. The cost of normal maintenance and repairs that do not add to the value of assets or materially extend the useful lives of the assets is not capitalized. The School District does not capitalize book collections or works of art.

Capital acquisition and construction are recorded as expenditures in the governmental fund financial statements at the time of purchase (including ancillary charges), and the related assets are reported as capital assets in the governmental activities' column in the government-wide financial statements.

Depreciation is computed using the straight-line for all assets, except land, and is used to allocate the actual or estimated historical cost of capital assets over estimated useful lives.

Capitalization thresholds and estimated useful lives of capital assets reported in the government-wide statements are as follows:

		Capitalization Policy	Estimated Useful Life
Land		All	N/A
Land Improvements	\$	5,000.00	20 to 80 years
Buildings and Improvements	\$	5,000.00	10 to 80 years
Equipment	\$	5,000.00	3 to 20 years
Intangible Assets	\$	5,000.00	10 to 20 years

### DEFERRED OUTFLOWS/INFLOWS OF RESOURCES

In addition to assets, the statement of financial position will report a separate section for deferred outflows of resources. This separate financial statement element represents a consumption of resources that applies to a future period(s) and therefore will not be recognized as an outflow of resources (expense/expenditure) until then.

In addition to liabilities, the statement of financial position will report a separate section for deferred inflows of resources. This separate financial statement element represents an acquisition of resources that applies to a future period(s) and therefore will not be recognized as an inflow of resources (revenue) until that time.

### COMPENSATED ABSENCES

Compensated absences payable consists of vacation leave employees earned based on services already rendered.

Vacation leave of 12 days is awarded on a fiscal year basis to all full-time personnel employed on a twelve-month basis until they have reached 5 fiscal years of service. Between 5 to 10 fiscal years of service, employees earn 15 days and after 10 fiscal years of service they earn 18 days per fiscal year. No other employees are eligible to earn vacation leave. Vacation leave not utilized during the fiscal year may be carried over to the next fiscal year, providing such vacation leave does not exceed 30 days. Upon terminating employment, the School District pays all unused and unforfeited vacation benefits to employees. Accordingly, vacation benefits are accrued as a liability in the government-wide financial statements. A liability for these amounts is reported in the governmental fund financial statements only if they have matured, for example, as a result of employee resignations and retirements by fiscal-year end.

Members of the Teachers Retirement System of Georgia (TRS) may apply unused sick leave toward early retirement. The liability for early retirement will be borne by TRS rather than by the individual School Districts. Otherwise, sick leave does not vest with the employee, and no liability is reported in the School District's financial statements.

### LONG-TERM LIABILITIES AND BOND DISCOUNTS/PREMIUMS

In the School District's government-wide financial statements, outstanding debt is reported as liabilities. Bond premiums and discounts and the difference between the reacquisition price and the net carrying value of refunded debt are deferred and amortized over the life of the bonds using the straight-line method. To conform to generally accepted accounting principles, bond premiums and discounts should be amortized using the effective interest method. The effect of this deviation is deemed to be immaterial to the fair presentation of the basic financial statements. Bond issuance costs are recognized as an outflow of resources in the fiscal year in which the bonds are issued.

In the governmental fund financial statements, the School District recognizes the proceeds of debt and premiums as other financing sources of the current period. Bond issuance costs are reported as debt service expenditures.

### PENSIONS

For purposes of measuring the net pension liability, deferred outflows of resources and deferred inflows of resources related to pensions, and pension expense, information about the pension plan's fiduciary net position and additions to/deductions from the plan's fiduciary net position have been determined on the same basis as they are reported by the plan. For this purpose, benefit payments (including refunds of employee contributions) are recognized when due and payable in accordance with the benefit terms. Investments are reported at fair value.

## POSTEMPLOYMENT BENEFITS OTHER THAN PENSIONS (OPEB)

For purposes of measuring the net OPEB liability, deferred outflows of resources and deferred inflows of resources related to OPEB, and OPEB expense, information about the fiduciary net position of the Georgia School Employees Postemployment Benefit Fund (School OPEB Fund) and additions to/deductions from School OPEB Fund fiduciary net position have been determined on the same basis as they are reported by School OPEB Fund. For this purpose, benefit payments are recognized when due and payable in accordance with the benefit terms. Investments are reported at fair value.

## FUND BALANCES

Fund balance for governmental funds is reported in classifications that comprise a hierarchy based primarily on the extent to which the government is bound to honor constraints on the specific purposes for which amounts in those funds can be spent.

The School District's fund balances are classified as follows:

**Nonspendable** consists of resources that cannot be spent either because they are in a nonspendable form or because they are legally or contractually required to be maintained intact.

**Restricted** consists of resources that can be used only for specific purposes pursuant constraints either (1) externally imposed by creditors, grantors, contributors, or laws and regulations of other governments or (2) imposed by law through constitutional provisions or enabling legislation.

**Committed** consists of resources that can be used only for specific purposes pursuant to constraints imposed by formal action of the Board. The Board is the School District's highest level of decision-making authority, and the formal action that is required to be taken to establish, modify, or rescind a fund balance commitment is a resolution approved by the Board. Committed fund balance also should incorporate contractual obligations to the extent that existing resources in the fund have been specifically committed for use in satisfying those contractual requirements.

**Assigned** consists of resources constrained by the School District's intent to be used for specific purposes but are neither restricted nor committed. The intent should be expressed by (1) the Board or (2) the budget or finance committee, or the Superintendent, or designee, to assign amounts to be used for specific purposes.

**Unassigned** consists of resources within the general fund not meeting the definition of any aforementioned category. The general fund should be the only fund that reports a positive unassigned fund balance amount. In other governmental funds, it may be necessary to report a negative unassigned fund balance.

## USE OF ESTIMATES

The preparation of the financial statements in conformity with accounting principles generally accepted in the United States requires management to make estimates and assumptions that affect the amounts reported in the financial statements and accompanying notes. Actual results may differ from those estimates.

## PROPERTY TAXES

The Barrow County Board of Commissioners adopted the property tax levy for the 2018 tax digest year (calendar year) on September 15, 2018 (levy date) based on property values as of January 1, 2018. Taxes were due on November 15, 2018 (lien date). Taxes collected within the current fiscal year or within 60 days after year-end on the 2018 tax digest are reported as revenue in the governmental funds for fiscal year 2019. The Barrow County Tax Commissioner bills and collects the property taxes for the School District, withholds 2.5% of taxes collected as a fee for tax collection and remits the balance of taxes collected to the School District. Property tax revenues, at the fund reporting level, during the fiscal year ended June 30, 2019, for maintenance and operations amounted to \$37,882,015.30.

BARROW COUNTY BOARD OF EDUCATION  
NOTES TO THE BASIC FINANCIAL STATEMENTS  
JUNE 30, 2019

EXHIBIT "H"

The tax millage rate levied for the 2018 tax year (calendar year) for the School District was as follows (a mill equals \$1 per thousand dollars of assessed value):

School Operations	<u>18.50</u> mills
-------------------	--------------------

Additionally, Title Ad Valorem Tax revenues, at the fund reporting level, amounted to \$3,487,316.67 during fiscal year ended June 30, 2019.

#### **SALES TAXES**

Education Special Purpose Local Option Sales Tax (ESPLOST), at the fund reporting level, during the year amounted to \$11,788,492.24 and is to be used for capital outlay for educational purposes or debt service. This sales tax was authorized by local referendum and the sales tax must be re-authorized at least every five years.

#### **NOTE 3: BUDGETARY DATA**

The budget is a complete financial plan for the School District's fiscal year and is based upon careful estimates of expenditures together with probable funding sources. The budget is legally adopted each year for the general, debt service, and capital projects funds. There is no statutory prohibition regarding over expenditure of the budget at any level. The budget for all governmental funds, except the various school activity (principal) accounts, is prepared and adopted by fund and function. The legal level of budgetary control was established by the Board at the aggregate fund level. The budget for the general fund was prepared in accordance with accounting principles generally accepted in the United States of America.

The budgetary process begins with the School District's administration presenting an initial budget for the Board's review. The administration makes revisions as necessary based on the Board's guidelines, and a tentative budget is approved. After approval of this tentative budget by the Board, such budget is advertised at least once in a newspaper of general circulation in the locality, as well as the School District's website. At the next regularly scheduled meeting of the Board after advertisement, the Board receives comments on the tentative budget, makes revisions as necessary and adopts a final budget. The approved budget is then submitted, in accordance with provisions of O.C.G.A. §20-2-167(c), to the Georgia Department of Education. The Board may increase or decrease the budget at any time during the year. All unexpended budget authority lapses at fiscal year-end.

See the General Fund Schedule of Revenues, Expenditures and Changes in Fund Balances – Budget to Actual in the Supplementary Information Section for a detail of any over/under expenditures during the fiscal year under review.

#### **NOTE 4: DEPOSITS, CASH EQUIVALENTS AND INVESTMENTS**

##### **COLLATERALIZATION OF DEPOSITS**

O.C.G.A. § 45-8-12 provides that there shall not be on deposit at any time in any depository for a time longer than ten days a sum of money which has not been secured by surety bond, by guarantee of insurance, or by collateral. The aggregate of the face value of such surety bond and the market value of securities pledged shall be equal to not less than 110% of the public funds being secured after the deduction of the amount of deposit insurance. If a depository elects the pooled method (O.C.G.A. § 45-8-13.1) the aggregate of the market value of the securities pledged to secure a pool of public funds shall be not less than 110% of the daily pool balance.

BARROW COUNTY BOARD OF EDUCATION  
NOTES TO THE BASIC FINANCIAL STATEMENTS  
JUNE 30, 2019

EXHIBIT "H"

Acceptable security for deposits consists of any one of or any combination of the following:

- (1) Surety bond signed by a surety company duly qualified and authorized to transact business within the State of Georgia,
- (2) Insurance on accounts provided by the Federal Deposit Insurance Corporation,
- (3) Bonds, bills, notes, certificates of indebtedness or other direct obligations of the United States or of the State of Georgia,
- (4) Bonds, bills, notes, certificates of indebtedness or other obligations of the counties or municipalities of the State of Georgia,
- (5) Bonds of any public authority created by the laws of the State of Georgia, providing that the statute that created the authority authorized the use of the bonds for this purpose,
- (6) Industrial revenue bonds and bonds of development authorities created by the laws of the State of Georgia, and
- (7) Bonds, bills, notes, certificates of indebtedness, or other obligations of a subsidiary corporation of the United States government, which are fully guaranteed by the United States government both as to principal and interest or debt obligations issued by or securities guaranteed by the Federal Land Bank, the Federal Home Loan Bank, the Federal Intermediate Credit Bank, the Central Bank for Cooperatives, the Farm Credit Banks, the Federal Home Loan Mortgage Association, and the Federal National Mortgage Association.

#### CATEGORIZATION OF DEPOSITS

Custodial credit risk is the risk that in the event of a bank failure, the School District's deposits may not be returned to it. The School District does not have a deposit policy for custodial credit risk. At June 30, 2019, the School District had deposits with a carrying amount of \$39,225,983.32, and a bank balance of \$40,262,617.79. The bank balances insured by Federal depository insurance were \$666,500.65 and the bank balances collateralized with securities held by the pledging financial institution's trust department or agent in the School District's name were \$39,596,117.14.

Reconciliation of cash and cash equivalents balances to carrying value of deposits:

Cash and cash equivalents	
Statement of Net Position	\$ 61,135,039.94
Statement of Fiduciary Net Position	<u>283,571.80</u>
Total cash and cash equivalents	61,418,611.74
Add:	
Deposits with original maturity of three months or more reported as investments	54,868.68
Less:	
Cash on hand	400.00
Investment pools reported as cash and cash equivalents	
Georgia Fund 1	<u>22,247,097.10</u>
Total carrying value of deposits - June 30, 2019	<u>\$ 39,225,983.32</u>



### CATEGORIZATION OF CASH EQUIVALENTS

The School District reported cash equivalents of \$22,247,097.10 in Georgia Fund 1, a local government investment pool, which is included in the cash balances above. Georgia Fund 1 is not registered with the SEC as an investment company and does not operate in a manner consistent with the SEC's Rule 2a-7 of the Investment Company Act of 1940. The investment is valued at the pool's share price, \$1.00 per share, which approximates fair value. The pool is an AAf rated investment pool by Standard and Poor's. The weighted average maturity of Georgia Fund 1 may not exceed 60 days. The weighted average maturity for Georgia Fund 1 on June 30, 2019, was 39 days.

Georgia Fund 1, administered by the State of Georgia, Office of the State Treasurer, is not required to be categorized since the School District did not own any specific identifiable securities in the pool. The investment policy of the State of Georgia, Office of the State Treasurer for the Georgia Fund 1, does not provide for investment in derivatives or similar investments. Additional information on the Georgia Fund 1 is disclosed in the *State of Georgia* Comprehensive Annual Financial Report. This audit can be obtained from the Georgia Department of Audits and Accounts at [www.audits.ga.gov/SGD/CAFR.html](http://www.audits.ga.gov/SGD/CAFR.html).

### CATEGORIZATION OF INVESTMENTS

At June 30, 2019, the School District had the following investments:

Investment Type	Fair Value	Investment Maturity Less Than 1 Year
Debt Securities		
Mutual Bond Fund	\$ 87,526.13	\$ 87,526.13

### Fair Value of Investments

The School District measures and records its investments using fair value measurement guidelines established by generally accepted accounting principles. These guidelines recognize a three-tiered fair value hierarchy, as follows:

- Level 1: Quoted prices for identical investments in active markets;
- Level 2: Observable inputs other than quoted market prices; and,
- Level 3: Unobservable inputs.

At June 30, the School District had the following investments by fair value level:

Mutual Bond Funds of \$87,526.13 are valued using quoted prices for identical instruments in active markets. (Level 1 inputs)

### Interest Rate Risk

Interest rate risk is the risk that changes in interest rates of debt investment will adversely affect the fair value of an investment. The School District does not have a formal policy for managing interest rate risk.

### Custodial Credit Risk

Custodial credit risk for investments is the risk that, in the event of the failure of the counterparty to a transaction, the School District will not be able to recover the value of the investment or collateral securities that are in the possession of an outside party. The School District does not have a formal policy for managing custodial credit risk.

At June 30, 2019, \$87,526.13 of the School District's applicable investments were held by the investment's counterparty, not in the School District's name.

BARROW COUNTY BOARD OF EDUCATION  
NOTES TO THE BASIC FINANCIAL STATEMENTS  
JUNE 30, 2019

EXHIBIT "H"

### Credit Quality Risk

Credit quality risk is the risk that an issuer or other counterparty to an investment will not fulfill its obligations. State law limits investments to those prescribed O.C.G.A. §36-83-4. The School District does not have a formal policy that would further limit its investment choices or one that addresses credit risk.

As discussed above, \$87,526.13 is invested in Bond Mutual Funds, which are rated as AAA for Credit quality risks.

### NOTE 5: RESTRICTED ASSETS

The restricted investment balance, totaling \$87,526.13 is for the Rutland Center revenue bonds. These assets are pledged to redeem revenue bonds upon maturity.

### NOTE 6: CAPITAL ASSETS

The following is a summary of changes in the capital assets for governmental activities during the fiscal year:

	Balances July 1, 2018	Increases	Decreases	Balances June 30, 2019
Governmental Activities				
Capital Assets, Not Being Depreciated:				
Land	\$ 5,400,604.82	\$ -	\$ -	\$ 5,400,604.82
Construction in Progress	22,360.00	9,497,348.79	-	9,519,708.79
Total Capital Assets Not Being Depreciated	5,422,964.82	9,497,348.79	-	14,920,313.61
Capital Assets Being Depreciated				
Buildings and Improvements	225,528,420.91	49,905.36	-	225,578,326.27
Equipment	21,726,396.63	2,254,517.22	56,000.00	23,924,913.85
Land Improvements	3,592,009.84	51,227.33	-	3,643,237.17
Less Accumulated Depreciation for:				
Buildings and Improvements	48,674,740.23	4,303,611.77	-	52,978,352.00
Equipment	16,863,212.05	1,265,417.06	56,000.00	18,072,629.11
Land Improvements	2,741,149.84	100,591.04	-	2,841,740.88
Total Capital Assets, Being Depreciated, Net	182,567,725.26	(3,313,969.96)	-	179,253,755.30
Governmental Activities Capital Assets - Net	\$ 187,990,690.08	\$ 6,183,378.83	\$ -	\$ 194,174,068.91

Current year depreciation expense by function is as follows:

Instruction	\$ 4,092,051.94
Support Services	
Pupil Services	\$ 68,653.50
Improvements of Instructional Services	69,231.60
Educational Media Services	1,057.80
General Administration	28,058.99
Business Administration	6,234.67
Maintenance and Operation of Plant	371,636.91
Student Transportation Services	820,221.44
Central Support Services	19,564.11
Enterprise Services	76,794.12
Food Services	116,114.79
	\$ 5,669,619.87



BARROW COUNTY BOARD OF EDUCATION  
NOTES TO THE BASIC FINANCIAL STATEMENTS  
JUNE 30, 2019

EXHIBIT "H"

**NOTE 7: INTERFUND ASSETS, LIABILITIES, AND TRANSFERS**

**INTERFUND ASSETS AND LIABILITIES**

Due to and due from other funds are recorded for interfund receivables and payables which arise from interfund transactions. Interfund balances at June 30, 2019, consisted of the following:

	<u>Due From Other Funds</u>	<u>Due To Other Funds</u>
General Fund	\$ -	\$ 371.46
Capital Projects Fund	<u>371.46</u>	<u>-</u>
	<u>\$ 371.46</u>	<u>\$ 371.46</u>

The general fund owes the capital projects fund money that was deposited in the general fund but needs to go into the capital projects fund.

**INTERFUND TRANSFERS**

Interfund transfers for the year ended June 30, 2019, consisted of the following:

<u>Transfers to</u>	<u>Transfers From Capital Projects Fund</u>
Debt Service Fund	<u>\$ 8,629,184.48</u>

Transfers are used to move sales tax revenues collected by the capital projects fund to the debt service fund to pay principal and interest on bonds.

**NOTE 8: LONG-TERM LIABILITIES**

The changes in long-term liabilities during the fiscal year for governmental activities were as follows:

	<u>Governmental Activities</u>				
	<u>Balance July 1, 2018</u>	<u>Additions</u>	<u>Deductions</u>	<u>Balance June 30, 2019</u>	<u>Due Within One Year</u>
General Obligation (G.O.) Bonds	\$ 80,060,000.00	\$ -	\$ 5,195,000.00	\$ 74,865,000.00	\$ 5,405,000.00
Unamortized Bond Premiums	5,743,288.26	-	565,460.96	5,177,827.30	565,460.96
Financed Purchases	752,889.36	-	89,109.51	663,779.85	91,691.38
Capital Leases	-	610,932.00	48,265.00	562,667.00	122,892.00
Revenue Bonds	240,379.90	-	78,837.62	161,542.28	80,126.63
Compensated Absences(1)	<u>448,743.49</u>	<u>467,067.57</u>	<u>423,609.66</u>	<u>492,201.40</u>	<u>-</u>
	<u>\$ 87,245,301.01</u>	<u>\$ 1,077,999.57</u>	<u>\$ 6,400,282.75</u>	<u>\$ 81,923,017.83</u>	<u>\$ 6,265,170.97</u>

- (1) The portion of compensated absences due within one year has been determined to be immaterial to the basic financial statements.

The School District's outstanding bonds from direct borrowings and direct placements related to governmental activities of \$74,865,000.00 for general obligation debt bonds contains a provision that in an event of nonpayment, the paying agent will notify the State of Georgia Department of Education to withhold state appropriations.

BARROW COUNTY BOARD OF EDUCATION  
NOTES TO THE BASIC FINANCIAL STATEMENTS  
JUNE 30, 2019

EXHIBIT "H"

The School District's outstanding financed purchases related to governmental activities of \$663,779.85 contain a provision that in an event of default, outstanding amounts become immediately due if the School District is unable to make payment. Additionally, the financed purchases contain a provision that should the School District fail to budget, appropriate, or otherwise make available funds to pay rental payments the agreement shall be deemed terminated at the end of the renewal term, and the School District shall cease to use the equipment and peaceably remove and deliver the equipment to the lessor at the School District's expense to the location(s) specified by the lessor.

### GENERAL OBLIGATION DEBT OUTSTANDING

The School District's bonded debt consists of various issues of general obligation bonds that are generally noncallable with interest payable semiannually. Bond proceeds primarily pay for acquiring or constructing capital facilities. Bonds have also been issued to advance-refund previously issued bonds. The School District repays general obligation bonds from voter-approved sales taxes. General obligation bonds are direct obligations and pledge the full faith and credit of the School District.

General obligation bonds currently outstanding are as follows:

Description	Interest Rates	Issue Date	Maturity Date	Amount Issued	Amount Outstanding
General Government - Refunding - Series 2010	3.75% - 5.00%	11/18/2010	2/1/2027	\$ 38,700,000.00	\$ 29,145,000.00
General Government - Series 2012A	2.00% - 3.00%	11/15/2012	2/1/2027	9,475,000.00	9,475,000.00
General Government - Series 2012B	3.00% - 4.00%	11/15/2012	2/1/2022	5,945,000.00	3,210,000.00
General Government - Series 2014	2.55%	2/14/2014	2/1/2027	5,880,000.00	4,850,000.00
General Government - Refunding - Series 2016	3.00% - 4.00%	3/29/2016	2/1/2032	17,360,000.00	17,360,000.00
General Government - Series 2017	3.00% - 5.00%	8/15/2017	2/1/2032	10,825,000.00	10,825,000.00
				<u>\$ 88,185,000.00</u>	<u>\$ 74,865,000.00</u>

The following schedule details debt service requirements to maturity for the School District's total general obligation bonds payable:

Fiscal Year Ended June 30:	General Obligation Debt		Unamortized Bond Premium
	Principal	Interest	
2020	\$ 5,405,000.00	\$ 2,899,487.50	\$ 565,460.96
2021	5,620,000.00	2,705,349.60	565,460.96
2022	5,845,000.00	2,497,662.50	565,460.96
2023	6,070,000.00	2,252,162.50	532,565.32
2024	6,315,000.00	1,999,322.50	499,669.77
2025 - 2029	29,930,000.00	6,125,960.00	1,916,048.96
2030 - 2032	<u>15,680,000.00</u>	<u>1,005,200.00</u>	<u>533,160.37</u>
Total Principal and Interest	<u>\$ 74,865,000.00</u>	<u>\$ 19,485,144.60</u>	<u>\$ 5,177,827.30</u>

### REVENUE BONDS

The School District entered into a contract with the Northeast Georgia Regional Educational Service Agency, dated June 1, 2006, for the issuance of revenue bonds to provide funds for the construction and subsequent lease of the Rutland Center. Under the terms of the contract, the Northeast Georgia Regional Educational Service Agency issued \$912,332.95 in revenue bonds on behalf of the School District. The obligation of the School District is absolute and unconditional so long as any of the bonds remain outstanding. Under the contract, the School District will exercise its power of taxation to the extent necessary to pay the amounts required to be paid by the contract.

BARROW COUNTY BOARD OF EDUCATION  
NOTES TO THE BASIC FINANCIAL STATEMENTS  
JUNE 30, 2019

EXHIBIT "H"

Debt currently outstanding under Revenue Bonds is as follows:

Purpose	Interest Rate	Issue Date	Maturity Date	Amount Issued	Amount Outstanding
General Government - Rutland Center Revenue Bonds	4.16%	6/1/2006	8/1/2020	\$ 912,332.95	\$ 161,542.28

The following is a schedule of total revenue bond payments:

Fiscal Year Ended June 30:	Principal	Interest
2020	\$ 80,126.63	\$ 6,798.55
2021	81,415.65	3,465.28
Total Principal and Interest	\$ 161,542.28	\$ 10,263.83

### CAPITAL LEASES

During the current fiscal year, the School District entered into a lease agreement as lessee for financing the acquisition of 209 GPS units for use on school buses at a cost of \$610,932.00. This lease qualifies as a capital lease for accounting purposes, and, therefore, has been recorded at the present value of the future minimum lease payments as of the date of inception. Payments of the lease shall be made from the School District's capital projects fund.

Capital leases currently outstanding are as follows:

Purpose	Interest Rates	Issue Date	Maturity Date	Amount Issued	Amount Outstanding
General Government - Capital Lease	0.00%	5/2/2019	12/31/2023	\$ 31,752.00	\$ 31,752.00
General Government - Capital Lease	0.00%	7/17/2018	1/31/2024	579,180.00	530,915.00
				\$ 610,932.00	\$ 562,667.00

The following is a schedule of total capital lease payments:

Fiscal Year Ended June 30:	Principal
2020	\$ 122,892.00
2021	122,892.00
2022	122,892.00
2023	122,892.00
2024	71,099.00
Total Principal and Interest	\$ 562,667.00

BARROW COUNTY BOARD OF EDUCATION  
NOTES TO THE BASIC FINANCIAL STATEMENTS  
JUNE 30, 2019

EXHIBIT "H"

## OBLIGATIONS UNDER FINANCED PURCHASES

An energy efficiency lease agreement dated October 6, 2015 was executed by and between the School District, the lessee, and TCF Equipment Finance, the lessor. The agreement authorized the borrowing of \$944,319.00 for the purchase of energy efficiency equipment, machinery, supplies, building modifications and other energy saving items. Payments of the lease shall be made from the School District's capital projects fund.

Debt currently outstanding is as follows:

Purpose	Interest Rate	Issue Date	Maturity Date	Amount Issued	Amount Outstanding
General Government-Energy Lease	2.85%	10/6/2015	2/1/2026	\$ 944,319.00	\$ 663,779.85

The following is a schedule of total finance purchase payments:

Fiscal Year Ended June 30:	Principal	Interest
2020	\$ 91,691.38	\$ 17,786.06
2021	94,348.03	15,129.41
2022	97,081.67	12,395.77
2023	99,894.53	9,582.91
2024	102,788.88	6,688.56
2025 - 2026	177,975.36	4,487.04
Total Principal and Interest	\$ 663,779.85	\$ 66,069.75

## COMPENSATED ABSENCES

Compensated absences represent obligations of the School District relating to employees' rights to receive compensation for future absences based upon service already rendered. This obligation relates only to vesting accumulating leave in which payment is probable and can be reasonably estimated. Typically, the general fund is the fund used to liquidate this long-term debt. The School District uses the vesting method to compute compensated absences.

## NOTE 9: RISK MANAGEMENT

### INSURANCE

#### Commercial Insurance

The School District is exposed to various risks of loss related to torts; theft of, damage to and destruction of assets; errors or omissions; job related illness or injuries to employees; and natural disasters. Except as described below, the School District carries commercial insurance for these risks. Settled claims resulting from these insured risks have not exceed commercial insurance coverage in any of the past three fiscal years.

#### Georgia School Boards Association Risk and Insurance Management System

The School District participates in the Georgia School Boards Association Risk and Insurance Management System (the System), a public entity risk pool organized on July 1, 1994, to develop and administer a plan to reduce risk of loss on account of general liability, motor vehicle liability, or property damage, including safety engineering and other loss prevention and control techniques, and to administer one or more groups of self-insurance funds, including the processing and defense of claims brought against members of the system. The School District pays an annual premium to the System for its general insurance coverage. Additional coverage is provided through agreements by the System with other companies according to their specialty for property, boiler and machinery (including

BARROW COUNTY BOARD OF EDUCATION  
NOTES TO THE BASIC FINANCIAL STATEMENTS  
JUNE 30, 2019

EXHIBIT "H"

coverage for flood and earthquake), general liability (including coverage for sexual harassment, molestation and abuse), errors and omissions, crime and automobile risks. Payment of excess insurance for the System varies by line of coverage.

#### WORKERS' COMPENSATION

##### Georgia School Boards Association Workers' Compensation Fund

The School District participates in the Georgia School Boards Association Workers' Compensation Fund (the Fund), a public entity risk pool organized on July 1, 1992, to develop, implement, and administer a program of workers' compensation self-insurance for its member organizations. The School District pays an annual premium to the Fund for its Workers' Compensation insurance coverage. Excess insurance coverage is provided through an agreement by the Fund with the Safety National Casualty Corporation to provide coverage for potential losses sustained by the Fund in excess of \$550 thousand loss per occurrence, up to the statutory limit. Employers' Liability insurance coverage is also provided by Safety National Casualty Corporation to provide coverage for potential losses sustained by the Fund in excess of \$550 thousand loss per occurrence, up to \$2.0 million. In addition to the \$550,000.00 per occurrence retention, the Fund also retains an additional \$200,000.00 per year corridor retention.

#### UNEMPLOYMENT COMPENSATION

The School District is self-insured with regard to unemployment compensation claims. The School District accounts for claims within the general fund with expenses/expenditures and liability being reported when it is probable that a loss has occurred, and the amount of that loss can be reasonably estimated.

Changes in the unemployment compensation claims liability during the last two fiscal years are as follows:

	Beginning of Year Liability	Claims and Changes in Estimates	Claims Paid	End of Year Liability
2018	\$ -	\$ 10,708.79	\$ 10,708.79	\$ -
2019	\$ -	\$ 12,395.00	\$ 12,395.00	\$ -

#### SURETY BOND

The School District purchased a surety bond to provide additional insurance coverage as follows:

Position Covered	Amount
Superintendent	\$ 100,000.00

BARROW COUNTY BOARD OF EDUCATION  
NOTES TO THE BASIC FINANCIAL STATEMENTS  
JUNE 30, 2019

EXHIBIT "H"

**NOTE 10: FUND BALANCE CLASSIFICATION DETAILS**

The School District's financial statements include the following amounts presented in the aggregate at June 30, 2019:

Nonspendable			
Inventories	\$	64,687.35	
Prepaid Assets		1,250.00	\$ 65,937.35
Restricted			
Continuation of Federal Programs	\$	2,466,440.10	
Capital Projects		17,229,797.62	
Debt Service		5,023,328.60	24,719,566.32
Assigned			
School Activity Accounts			1,525,617.29
Unassigned			24,170,917.24
			<u>50,482,038.20</u>
Fund Balance, June 30, 2019	\$		<u>50,482,038.20</u>

When multiple categories of fund balance are available for expenditure, the School District will start with the most restricted category and spend those funds first before moving down to the next category with available funds.

**NOTE 11: SIGNIFICANT COMMITMENTS**

**COMMITMENTS UNDER CONSTRUCTION CONTRACTS**

The following is an analysis of significant outstanding construction or renovation contracts executed by the School District as of June 30, 2019, together with funding available:

Project	Unearned Executed Contracts (1)	Payments through June 30, 2019 (2)	Funding Available From State (1)
New High School Barrow Arts & Sciences Academy	\$ 14,887,646.00	\$ 4,616,006.00	\$ 7,035,867.00
Apalachee High School Renovations Phase 1	456,437.00	897,171.00	1,493,296.00
Westside Middle School Renovations Phase 1	1,243,587.00	2,545,730.00	1,488,334.00
Yargo Elementary School Renovations	482,468.00	830,032.00	463,778.00
Apalachee High School - Turf	570,590.00	375,316.00	-
Winder-Barrow High School - Turf	693,578.00	177,298.00	-
	<u>\$ 18,334,306.00</u>	<u>\$ 9,441,553.00</u>	<u>\$ 10,481,275.00</u>

(1) The amounts described are not reflected in the basic financial statements.

(2) Payments include contracts and retainages payable at year-end.

**NOTE 12: SIGNIFICANT CONTINGENT LIABILITIES**

**FEDERAL GRANTS**

Amounts received or receivable principally from the Federal government are subject to audit and review by grantor agencies. This could result in requests for reimbursement to the grantor agency for any costs which are disallowed under grant terms. Any disallowances resulting from the grantor audit may become a liability of the School District. However, the School District believes that such disallowances, if any, will be immaterial to its overall financial position.

## LITIGATION

The School District is a defendant in various legal proceedings pertaining to matters incidental to the performance of routine School District operations. The ultimate disposition of these proceedings is not presently determinable, but is not believed to have a material adverse effect on the financial condition of the School District.

On May 21, 2004, a previous workers' compensation insurer of the School District, Cornerstone Mutual Insurance Company, was placed under an order of administrative supervision of the Georgia Department of Insurance and is insolvent. As a result, the School District may be liable for one outstanding workers' compensation claim that was being administered by the company. Due to the nature of the claim, the amount of future liability of the School District is not determinable; however, it is not believed to be material to the basic financial statements.

### NOTE 13: OTHER POST-EMPLOYMENT BENEFITS (OPEB)

#### GEORGIA SCHOOL PERSONNEL POST-EMPLOYMENT HEALTH BENEFIT FUND

**Plan Description:** Certified teachers and non-certified public school employees of the School District as defined in §20-2-875 of the Official Code of Georgia Annotated (O.C.G.A.) are provided OPEB through the School OPEB Fund - a cost-sharing multiple-employer defined benefit postemployment healthcare plan, reported as an employee trust fund and administered by a Board of Community Health (Board). Title 20 of the O.C.G.A. assigns the authority to establish and amend the benefit terms of the group health plan to the Board.

**Benefits Provided:** The School OPEB Fund provides healthcare benefits for retirees and their dependents due under the group health plan for public school teachers, including librarians, other certified employees of public schools, regional educational service agencies and non-certified public school employees. Retiree medical eligibility is attained when an employee retires and is immediately eligible to draw a retirement annuity from Employees' Retirement System (ERS), Georgia Judicial Retirement System (JRS), Legislative Retirement System (LRS), Teachers Retirement System (TRS) or Public School Employees Retirement System (PSERS). If elected, dependent coverage starts on the same day as retiree coverage. Medicare-eligible retirees are offered Standard and Premium Medicare Advantage plan options. Non-Medicare eligible retiree plan options include Health Reimbursement Arrangement (HRA), Health Maintenance Organization (HMO) and a High Deductible Health Plan (HDHP). The School OPEB Fund also pays for administrative expenses of the fund. By law, no other use of the assets of the School OPEB Fund is permitted.

**Contributions:** As established by the Board, the School OPEB Fund is substantially funded on a pay-as-you-go basis; that is, annual cost of providing benefits will be financed in the same year as claims occur. Contributions to the School OPEB Fund from the School District were \$4,198,686.00 for the year ended June 30, 2019. Active employees are not required to contribute to the School OPEB Fund.

#### ***OPEB Liabilities, OPEB Expense, and Deferred Outflows of Resources and Deferred Inflows of Resources Related to OPEB***

At June 30, 2019, the School District reported a liability of \$99,751,009.00 for its proportionate share of the net OPEB liability. The net OPEB liability was measured as of June 30, 2018. The total OPEB liability used to calculate the net OPEB liability was based on an actuarial valuation as of June 30, 2017. An expected total OPEB liability as of June 30, 2018 was determined using standard roll-forward techniques. The School District's proportion of the net OPEB liability was actuarially determined based on employer contributions during the fiscal year ended June 30, 2018. At June 30, 2018, the School District's proportion was 0.784842%, which was a decrease of 0.003953% from its proportion measured as of June 30, 2017.

BARROW COUNTY BOARD OF EDUCATION  
NOTES TO THE BASIC FINANCIAL STATEMENTS  
JUNE 30, 2019

EXHIBIT "H"

For the year ended June 30, 2019, the School District recognized OPEB expense of \$4,022,441.00. At June 30, 2019, the School District reported deferred outflows of resources and deferred inflows of resources related to OPEB from the following sources:

	OPEB	
	Deferred Outflows of Resources	Deferred Inflows of Resources
Differences between expected and actual experience	\$ -	\$ 2,268,943.00
Changes of assumptions	-	16,898,301.00
Net difference between projected and actual earnings on OPEB plan investments	134,963.00	-
Changes in proportion and differences between School District contributions and proportionate share of contributions	-	973,827.00
School District contributions subsequent to the measurement date	4,198,686.00	-
Total	<u>\$ 4,333,649.00</u>	<u>\$ 20,141,071.00</u>

School District contributions subsequent to the measurement date are reported as deferred outflows of resources and will be recognized as a reduction of the net OPEB liability in the year ended June 30, 2020. Other amounts reported as deferred outflows of resources and deferred inflows of resources related to OPEB will be recognized in OPEB expense as follows:

Year Ended June 30:	OPEB
2020	\$ (3,889,288.00)
2021	\$ (3,889,288.00)
2022	\$ (3,889,288.00)
2023	\$ (3,897,351.00)
2024	\$ (3,215,409.00)
2025	\$ (1,225,484.00)



BARROW COUNTY BOARD OF EDUCATION  
NOTES TO THE BASIC FINANCIAL STATEMENTS  
JUNE 30, 2019

EXHIBIT "H"

**Actuarial assumptions:** The total OPEB liability as of June 30, 2018 was determined by an actuarial valuation as of June 30, 2017 using the following actuarial assumptions and other inputs, applied to all periods included in the measurement and rolled forward to the measurement date of June 30, 2018:

**OPEB:**

Inflation	2.75%
Salary increases	3.25% - 9.00%, including inflation
Long-term expected rate of return	7.30%, compounded annually, net of investment expense, and including inflation
Healthcare cost trend rate	
Pre-Medicare Eligible	7.50%
Medicare Eligible	5.50%
Ultimate trend rate	
Pre-Medicare Eligible	4.75%
Medicare Eligible	4.75%
Year of Ultimate trend rate	
Pre-Medicare Eligible	2028
Medicare Eligible	2022

Mortality rates were based on the RP-2000 Combined Mortality Table for Males or Females, as appropriate, with adjustments for mortality improvements based on Scale BB as follows:

- For TRS members: The RP-2000 White Collar Mortality Table projected to 2025 with projection scale BB (set forward 1 year for males) is used for death after service retirement and beneficiaries. The RP-2000 Disabled Mortality Table projected to 2025 with projection scale BB (set forward two years for males and four years for females) is used for death after disability retirement.
- For PSERS members: The RP-2000 Blue-Collar Mortality Table projected to 2025 with projection scale BB (set forward 3 years for males and 2 years for females) is used for the period after service retirement and for beneficiaries of deceased members. The RP-2000 Disabled Mortality Table projected to 2025 with projection scale BB (set forward 5 years for both males and females) is used for the period after disability retirement.

The actuarial assumptions used in the June 30, 2017 valuation were based on the results of an actuarial experience study for the pension systems, which covered the five-year period ending June 30, 2014.

The remaining actuarial assumptions (e.g., initial per capita costs, health care cost trends, rate of plan participation, rates of plan election, etc.) used in the June 30, 2017 valuation were based on a review of recent plan experience done concurrently with the June 30, 2017 valuation.

Projection of benefits for financial reporting purposes are based on the substantive plan (the plan as understood by the employer and plan members) and include the types of benefits provided at the time of each valuation and the historical pattern of sharing of benefit costs between the employer and plan members to that point. The actuarial methods and assumptions used include techniques that are designed to reduce the effects of short-term volatility in actuarial accrued liabilities and the actuarial value of assets, consistent with the long-term perspective of the calculation.

BARROW COUNTY BOARD OF EDUCATION  
NOTES TO THE BASIC FINANCIAL STATEMENTS  
JUNE 30, 2019

EXHIBIT "H"

The long-term expected rate of return on OPEB plan investments was determined using a log-normal distribution analysis in which best-estimate ranges of expected future real rates of return (expected nominal returns, net of investment expense and the assumed rate of inflation) are developed for each major asset class. These ranges are combined to produce the long-term expected rate of return by weighting the expected future real rates of return by the target asset allocation percentage and by adding expected inflation. During fiscal year 2018, the School OPEB fund updated their investment strategy to a more long-term approach. The target allocation and best estimates of arithmetic real rates of return for each major asset class are summarized in the following table:

Asset class	Target allocation	Long-Term Expected Real Rate of Return*
Fixed income	30.00%	(0.50)%
Domestic Stocks – Large Cap	37.20%	9.00%
Domestic Stocks – Mid Cap	3.40%	12.00%
Domestic Stocks – Small Cap	1.40%	13.50%
Int'l Stocks - Developed Mkt	17.80%	8.00%
Int'l Stocks - Emerging Mkt	5.20%	12.00%
Alternatives	5.00%	10.50%
Total	100.00%	

\*Net of Inflation

**Discount rate:** The discount rate has changed since the prior measurement date from 3.58% to 3.87%. In order to measure the total OPEB liability for the School OPEB Fund, a single equivalent interest rate of 3.87% was used as the discount rate. This is comprised mainly of the yield or index rate for 20-year tax-exempt general obligation municipal bonds with an average rating of AA or higher (3.87% per the Bond Buyers Index). The projection of cash flows used to determine the discount rate assumed that contributions from members and from the employer will be made at the current level as averaged over the last five years, adjusted for annual projected changes in headcount. Projected future benefit payments for all current plan members were projected through 2118. Based on these assumptions, the OPEB plan's fiduciary net position was projected to be available to make OPEB payments for inactive employees through year 2018. Therefore, the calculated discount rate of 3.87% was applied to all periods of projected benefit payments to determine the total OPEB liability.

**Sensitivity of the School District's proportionate share of the net OPEB liability to changes in the discount rate:** The following presents the School District's proportionate share of the net OPEB liability calculated using the discount rate of 3.87%, as well as what the School District's proportionate share of the net OPEB liability would be if it were calculated using a discount rate that is 1-percentage-point lower (2.87%) or 1 percentage-point higher (4.87%) than the current discount rate:

	1% Decrease (2.87%)	Current Discount Rate (3.87%)	1% Increase (4.87%)
School District's proportionate share of the Net OPEB Liability	\$ 116,477,902.00	\$ 99,751,009.00	\$ 86,262,521.00

**Sensitivity of the School District's proportionate share of the net OPEB liability to changes in the healthcare cost trend rates:** The following presents the School District's proportionate share of the net OPEB liability, as well as what the School District's proportionate share of the net OPEB liability would be if it were calculated using healthcare cost trend rates that are 1-percentage-point lower or 1-percentage-point higher than the current healthcare cost trend rates:

	1% Decrease	Current Healthcare Cost Trend Rate	1% Increase
School District's proportionate share of the Net OPEB Liability	\$ 83,861,477.00	\$ 99,751,009.00	\$ 120,057,247.00

**OPEB plan fiduciary net position:** Detailed information about the OPEB plan's fiduciary net position is available in the Comprehensive Annual Financial Report (CAFR) which is publicly available at <https://sao.georgia.gov/comprehensive-annual-financial-reports>.

#### **NOTE 14: RETIREMENT PLANS**

The School District participates in various retirement plans administered by the State of Georgia, as further explained below.

#### **TEACHERS RETIREMENT SYSTEM OF GEORGIA (TRS)**

**Plan Description:** All teachers of the School District as defined in O.C.G.A §47-3-60 and certain other support personnel as defined by §47-3-63 are provided a pension through the Teachers Retirement System of Georgia (TRS). TRS, a cost-sharing multiple-employer defined benefit pension plan, is administered by the TRS Board of Trustees (TRS Board). Title 47 of the O.C.G.A. assigns the authority to establish and amend the benefit provisions to the State Legislature. The Teachers Retirement System of Georgia issues a publicly available separate financial report that can be obtained at [www.trsga.com/publications](http://www.trsga.com/publications).

**Benefits Provided:** TRS provides service retirement, disability retirement, and death benefits. Normal retirement benefits are determined as 2% of the average of the employee's two highest paid consecutive years of service, multiplied by the number of years of creditable service up to 40 years. An employee is eligible for normal service retirement after 30 years of creditable service, regardless of age, or after 10 years of service and attainment of age 60. Ten years of service is required for disability and death benefits eligibility. Disability benefits are based on the employee's creditable service and compensation up to the time of disability. Death benefits equal the amount that would be payable to the employee's beneficiary had the employee retired on the date of death. Death benefits are based on the employee's creditable service and compensation up to the date of death.

**Contributions:** Per Title 47 of the O.C.G.A., contribution requirements of active employees and participating employers, as actuarially determined, are established and may be amended by the TRS Board. Pursuant to O.C.G.A. §47-3-63, the employer contributions for certain full-time public school support personnel are funded on behalf of the employer by the State of Georgia. Contributions are expected to finance the costs of benefits earned by employees during the year, with an additional amount to finance any unfunded accrued liability. Employees were required to contribute 6.00% of their annual pay during fiscal year 2019. The School District's contractually required contribution rate for the year ended June 30, 2019 was 20.90% of annual School District payroll, of which 20.83% of payroll was required from the School District and 0.07% of payroll was required from the State. For the current fiscal year, employer contributions to the pension plan were \$15,306,505.33 and \$61,976.04 from the School District and the State, respectively.

## EMPLOYEES' RETIREMENT SYSTEM

**Plan description:** The Employees' Retirement System of Georgia (ERS) is a cost-sharing multiple-employer defined benefit pension plan established by the Georgia General Assembly during the 1949 Legislative Session for the purpose of providing retirement allowances for employees of the State of Georgia and its political subdivisions. ERS is directed by a Board of Trustees. Title 47 of the O.C.G.A. assigns the authority to establish and amend the benefit provisions to the State Legislature. ERS issues a publicly available financial report that can be obtained at [www.ers.ga.gov/formspubs/formspubs](http://www.ers.ga.gov/formspubs/formspubs).

**Benefits provided:** The ERS Plan supports three benefit tiers: Old Plan, New Plan, and Georgia State Employees' Pension and Savings Plan (GSEPS). Employees under the old plan started membership prior to July 1, 1982 and are subject to plan provisions in effect prior to July 1, 1982. Members hired on or after July 1, 1982 but prior to January 1, 2009 are new plan members subject to modified plan provisions. Effective January 1, 2009, new state employees and rehired state employees who did not retain membership rights under the Old or New Plans are members of GSEPS. ERS members hired prior to January 1, 2009 also have the option to irrevocably change their membership to GSEPS.

Under the old plan, the new plan, and GSEPS, a member may retire and receive normal retirement benefits after completion of 10 years of creditable service and attainment of age 60 or 30 years of creditable service regardless of age. Additionally, there are some provisions allowing for early retirement after 25 years of creditable service for members under age 60.

Retirement benefits paid to members are based upon the monthly average of the member's highest 24 consecutive calendar months, multiplied by the number of years of creditable service, multiplied by the applicable benefit factor. Annually, postretirement cost-of-living adjustments may also be made to members' benefits, provided the members were hired prior to July 1, 2009. The normal retirement pension is payable monthly for life; however, options are available for distribution of the member's monthly pension, at reduced rates, to a designated beneficiary upon the member's death. Death and disability benefits are also available through ERS.

**Contributions:** Member contributions under the old plan are 4% of annual compensation, up to \$4,200.00, plus 6% of annual compensation in excess of \$4,200.00. Under the old plan, the state pays member contributions in excess of 1.25% of annual compensation. Under the old plan, these state contributions are included in the members' accounts for refund purposes and are used in the computation of the members' earnable compensation for the purpose of computing retirement benefits. Member contributions under the new plan and GSEPS are 1.25% of annual compensation. The School District's required contribution rate for the year ended June 30, 2019 was 24.78% of annual covered payroll for old and new plan members and 21.78% for GSEPS members. The rates include the annual actuarially determined employer contributions rate of 24.66% of annual covered payroll of new and old plan members and 21.66% of GSEPS members, plus a 0.12% adjustment for the HB 751 one-time benefit adjustment of 3% to retired state employees. Contributions are expected to finance the costs of benefits earned by employees during the year, with an additional amount to finance any unfunded accrued liability. Employer contributions to the pension plan were \$12,922.66 for the current fiscal year.

## PUBLIC SCHOOL EMPLOYEES RETIREMENT SYSTEM (PSERS)

**Plan description:** PSERS is a cost-sharing multiple-employer defined benefit pension plan established by the Georgia General Assembly in 1969 for the purpose of providing retirement allowances for public school employees who are not eligible for membership in the Teachers Retirement System of Georgia. The ERS Board of Trustees, plus two additional trustees, administers PSERS. Title 47 of the O.C.G.A. assigns the authority to establish and amend the benefit provisions to the State Legislature. PSERS issues a publicly available financial report that can be obtained at [www.ers.ga.gov/formspubs/formspubs](http://www.ers.ga.gov/formspubs/formspubs).

BARROW COUNTY BOARD OF EDUCATION  
NOTES TO THE BASIC FINANCIAL STATEMENTS  
JUNE 30, 2019

EXHIBIT "H"

**Benefits provided:** A member may retire and elect to receive normal monthly retirement benefits after completion of ten years of creditable service and attainment of age 65. A member may choose to receive reduced benefits after age 60 and upon completion of ten years of service.

Upon retirement, the member will receive a monthly benefit of \$15.00, multiplied by the number of years of creditable service. Death and disability benefits are also available through PSERS. Additionally, PSERS may make periodic cost-of-living adjustments to the monthly benefits. Upon termination of employment, member contributions with accumulated interest are refundable upon request by the member. However, if an otherwise vested member terminates and withdraws his/her member contribution, the member forfeits all rights to retirement benefits.

**Contributions:** The general assembly makes an annual appropriation to cover the employer contribution to PSERS on behalf of local school employees (bus drivers, cafeteria workers, and maintenance staff). The annual employer contribution required by statute is actuarially determined and paid directly to PSERS by the State Treasurer in accordance with O.C.G.A. §47-4-29(a) and 60(b). Contributions are expected to finance the costs of benefits earned by employees during the year, with an additional amount to finance any unfunded accrued liability.

Individuals who became members prior to July 1, 2012 contribute \$4 per month for nine months each fiscal year. Individuals who became members on or after July 1, 2012 contribute \$10 per month for nine months each fiscal year. The State of Georgia, although not the employer of PSERS members, is required by statute to make employer contributions actuarially determined and approved and certified by the PSERS Board of Trustees. The current fiscal year contribution was \$171,724.00.

***Pension Liabilities, Pension Expense, and Deferred Outflows of Resources and Deferred Inflows of Resources Related to Pensions***

At June 30, 2019, the School District reported a liability of \$110,474,312.00 for its proportionate share of the net pension liability for TRS (\$110,392,585.00) and ERS (\$81,727.00).

The TRS net pension liability reflected a reduction for support provided to the School District by the State of Georgia for certain public school support personnel. The amount recognized by the School District as its proportionate share of the net pension liability, the related State of Georgia support, and the total portion of the net pension liability that was associated with the School District were as follows:

School District's proportionate share of the net pension liability	\$ 110,392,585.00
State of Georgia's proportionate share of the net pension liability associated with the School District	<u>471,850.00</u>
Total	<u>\$ 110,864,435.00</u>

The net pension liability for TRS and ERS was measured as of June 30, 2018. The total pension liability used to calculate the net pension liability was based on an actuarial valuation as of June 30, 2017. An expected total pension liability as of June 30, 2018 was determined using standard roll-forward techniques. The School District's proportion of the net pension liability was based on contributions to TRS and ERS during the fiscal year ended June 30, 2018.

At June 30, 2018, the School District's TRS proportion was 0.594719%, which was a decrease of 0.012910% from its proportion measured as of June 30, 2017. At June 30, 2018, the School District's ERS proportion was 0.001988%, which was a decrease of 0.000088% from its proportion measured as of June 30, 2017.

At June 30, 2019, the School District did not have a PSERS liability for a proportionate share of the net pension liability because of a Special Funding Situation with the State of Georgia, which is responsible for the net pension liability of the plan. The amount of the State's proportionate share of the net pension liability associated with the School District is \$1,057,943.00.

BARROW COUNTY BOARD OF EDUCATION  
NOTES TO THE BASIC FINANCIAL STATEMENTS  
JUNE 30, 2019

EXHIBIT "H"

The PSERS net pension liability was measured as of June 30, 2018. The total pension liability used to calculate the net pension liability was based on an actuarial valuation as of June 30, 2017. An expected total pension liability as of June 30, 2018 was determined using standard roll-forward techniques. The State's proportion of the net pension liability associated with the School District was based on actuarially determined contributions paid by the State during the fiscal year ended June 30, 2018.

For the year ended June 30, 2019, the School District recognized pension expense of \$11,219,999.00 for TRS, \$8,831.00 for ERS and \$244,952.00 for PSERS and revenue of \$56,105.00 for TRS and \$244,952.00 for PSERS. The revenue is support provided by the State of Georgia. For TRS the State of Georgia support is provided only for certain support personnel.

At June 30, 2019, the School District reported deferred outflows of resources and deferred inflows of resources related to pensions from the following sources:

	TRS		ERS	
	Deferred Outflows of Resources	Deferred Inflows of Resources	Deferred Outflows of Resources	Deferred Inflows of Resources
Differences between expected and actual experience	\$ 7,308,145.00	\$ 227,522.00	\$ 2,542.00	\$ -
Changes of assumptions	1,665,784.00	-	3,850.00	-
Net difference between projected and actual earnings on pension plan investments	-	3,018,348.00	-	1,883.00
Changes in proportion and differences between School District contributions and proportionate share of contributions	693,400.00	1,979,785.00	-	2,245.00
School District contributions subsequent to the measurement date	<u>15,306,505.33</u>	<u>-</u>	<u>12,922.66</u>	<u>-</u>
Total	<u>\$ 24,973,834.33</u>	<u>\$ 5,225,655.00</u>	<u>\$ 19,314.66</u>	<u>\$ 4,128.00</u>

The School District contributions subsequent to the measurement date of for TRS and for ERS are reported as deferred outflows of resources and will be recognized as a reduction of the net pension liability in the year ended June 30, 2020. Other amounts reported as deferred outflows of resources and deferred inflows of resources related to pensions will be recognized in pension expense as follows:

Year Ended June 30:	TRS	ERS
2020	\$ 5,439,817.00	\$ 4,715.00
2021	\$ 2,663,817.00	\$ 1,521.00
2022	\$ (3,238,187.00)	\$ (3,131.00)
2023	\$ (483,336.00)	\$ (841.00)
2024	\$ 59,563.00	\$ -

BARROW COUNTY BOARD OF EDUCATION  
NOTES TO THE BASIC FINANCIAL STATEMENTS  
JUNE 30, 2019

EXHIBIT "H"

**Actuarial assumptions:** The total pension liability as of June 30, 2018 was determined by an actuarial valuation as of June 30, 2017, using the following actuarial assumptions, applied to all periods included in the measurement:

***Teachers Retirement System:***

Inflation	2.75%
Salary increases	3.25% – 9.00%, average, including inflation
Investment rate of return	7.50%, net of pension plan investment expense, including inflation

Post-retirement mortality rates were based on the RP-2000 White Collar Mortality Table with future mortality improvement projected to 2025 with the Society of Actuaries' projection scale BB (set forward one year for males) for service requirements and dependent beneficiaries. The RP-2000 Disabled Mortality table with future mortality improvement projected to 2025 with Society of Actuaries' projection scale BB (set forward two years for males and four years for females) was used for the death after disability retirement. Rates of mortality in active service were based on the RP-2000 Employee Mortality Table projected to 2025 with projection scale BB.

The actuarial assumptions used in the June 30, 2017 valuation were based on the results of an actuarial experience study for the period July 1, 2009 – June 30, 2014.

***Employees' Retirement System:***

Inflation	2.75%
Salary increases	3.25% - 7.00%, including inflation
Investment rate of return	7.30%, net of pension plan investment expense, including inflation

Post-retirement mortality rates were based on the RP-2000 Combined Mortality Table with future mortality improvement projected to 2025 with the Society of Actuaries' projection scale BB and set forward 2 years for both males and females for service retirements and dependent beneficiaries. The RP- 2000 Disabled Mortality Table with future mortality improvement projected to 2025 with Society of Actuaries' projection scale BB and set back 7 years for males and set forward 3 years for females was used for death after disability retirement. There is a margin for future mortality improvement in the tables used by the System. Based on the results of the most recent experience study adopted by the Board on December 17, 2015, the numbers of expected future deaths are 9-12% less than the actual number of deaths that occurred during the study period for service retirements and beneficiaries and for disability retirements. Rates of mortality in active service were based on the RP-2000 Employee Mortality Table projected to 2025 with projection scale BB.

The actuarial assumptions used in the June 30, 2017 valuation were based on the results of an actuarial experience study for the period July 1, 2009 – June 30, 2014.

***Public School Employees Retirement System:***

Inflation	2.75%
Salary increases	N/A
Investment rate of return	7.30%, net of pension plan investment expense, including inflation

BARROW COUNTY BOARD OF EDUCATION  
NOTES TO THE BASIC FINANCIAL STATEMENTS  
JUNE 30, 2019

EXHIBIT "H"

Post-retirement mortality rates were based on the RP-2000 Blue-Collar Mortality Table projected to 2025 with projection scale BB (set forward 3 years for males and 2 years for females) for the period after service retirements and for dependent beneficiaries. The RP-2000 Disabled Mortality projected to 2025 with projection scale BB (set forward 5 years for both males and females) was used for death after disability retirement. There is a margin for future mortality improvement in the tables used by the System. Based on the results of the most recent experience study adopted by the Board on December 17, 2015, the numbers of expected future deaths are 9-11% less than the actual number of deaths that occurred during the study period for healthy retirees and 9-11% less than expected under the selected table for disabled retirees. Rates of mortality in active service were based on the RP-2000 Employee Mortality Table projected to 2025 with projection scale BB.

The actuarial assumptions used in the June 30, 2017 valuation were based on the results of an actuarial experience study for the period July 1, 2009 – June 30, 2014.

The long-term expected rate of return on TRS, ERS and PSERS pension plan investments was determined using a log-normal distribution analysis in which best-estimate ranges of expected future real rates of return (expected returns, net of pension plan investment expense and inflation) are developed for each major asset class. These ranges are combined to produce the long-term expected rate of return by weighting the expected future real rates of return by the target asset allocation percentage and by adding expected inflation. The target asset allocation and best estimates of arithmetic real rates of return for each major asset class are summarized in the following table:

Asset class	TRS Target allocation	ERS/PSERS Target allocation	Long-term expected real rate of return*
Fixed income	30.00%	30.00%	(0.50)%
Domestic large stocks	39.80%	37.20%	9.00%
Domestic mid stocks	3.70%	3.40%	12.00%
Domestic small stocks	1.50%	1.40%	13.50%
International developed market stocks	19.40%	17.80%	8.00%
International emerging market stocks	5.60%	5.20%	12.00%
Alternative	-	5.00%	10.50%
Total	100.00%	100.00%	

\* Rates shown are net of the 2.75% assumed rate of inflation

**Discount rate:** The discount rate used to measure the total TRS pension liability was 7.50%. The discount rate used to measure the total ERS and PSERS pension liability was 7.30%. The projection of cash flows used to determine the discount rate assumed that plan member contributions will be made at the current contribution rate and that employer and nonemployer contributions will be made at rates equal to the difference between actuarially determined contribution rates and the member rate. Based on those assumptions, the TRS, ERS and PSERS pension plan's fiduciary net position was projected to be available to make all projected future benefit payments of current plan members. Therefore, the long-term expected rate of return on pension plan investments was applied to all periods of projected benefit payments to determine the total pension liability.



***Sensitivity of the School District's proportionate share of the net pension liability to changes in the discount rate:*** The following presents the School District's proportionate share of the net pension liability calculated using the discount rate of 7.50% and 7.30%, as well as what the School District's proportionate share of the net pension liability would be if it were calculated using a discount rate that is 1-percentage-point lower (6.50% and 6.30%) or 1-percentage-point higher (8.50% and 8.30%) than the current rate:

<b>Teachers Retirement System:</b>	1% Decrease (6.50%)	Current Discount Rate (7.50%)	1% Increase (8.50%)
	<hr/>	<hr/>	<hr/>
School District's proportionate share of the net pension liability	\$ 184,276,834.00	\$ 110,392,585.00	\$ 49,508,204.00
<b>Employees' Retirement System:</b>	1% Decrease (6.30%)	Current Discount Rate (7.30%)	1% Increase (8.30%)
	<hr/>	<hr/>	<hr/>
School District's proportionate share of the net pension liability	\$ 116,245.00	\$ 81,727.00	\$ 52,317.00

***Pension plan fiduciary net position:*** Detailed information about the pension plan's fiduciary net position is available in the separately issued TRS, ERS and PSERS financial report which is publicly available at [www.trsga.com/publications](http://www.trsga.com/publications) and <http://www.ers.ga.gov/formspubs/formspubs.html>.

#### **NOTE 15: PRIOR YEAR DEFEASEMENT OF DEBT**

In prior years, the School District defeased certain general obligation bonds by placing the proceeds of new bonds in an irrevocable trust to provide for all future debt service payments on the old bonds. Accordingly, the trust account assets and the liability for the defeased bonds are not included in the School District's basic financial statements. On March 29, 2016, a portion of these bonds were redeemed. At June 30, 2019, \$3,100,000.00 of bonds outstanding are considered defeased.

#### **NOTE 16: TAX ABATEMENTS**

Barrow County enters into property tax abatement agreements with local businesses for the purpose of attracting or retaining businesses within their jurisdictions. The abatements may be granted to any business located within or promising to relocate to Barrow County.

For the fiscal year ended June 30, 2019, Barrow County abated property taxes due to the School District that were levied on September 15, 2018 and due on November 15, 2018 totaling \$299,815.16 under these programs including the following tax abatement agreements:

Through the Joint Development Authority, a \$23,876.96 property tax abatement to a company for expansion of their existing operations in the County, producing jobs and \$20,000,000 in capital investment in the community. The company is in year 6 of the 7 year tax abatement.

Through the Industrial Building Authority, a \$208,306.83 property tax abatement for a new business locating in the County creating 315,000 square feet of manufacturing and distribution capabilities and increasing employment. The Company is in year 5 of the 5 year tax abatement. If the Company does not meet the community jobs goals and community investment goals, all or a portion of the ad valorem property taxes saved for that year will be recouped.

Through the Industrial Building Authority, a \$67,631.37 property tax reduction for a new business locating in the County assuming 550,000 square feet of manufacturing and distribution capabilities and increasing employment. The Company is in year 4 of the 7 year tax abatement. If the Company does not meet the community jobs goals and community investment goals, all or a portion of the ad valorem property taxes saved for that year will be recouped.

BARROW COUNTY BOARD OF EDUCATION  
NOTES TO THE BASIC FINANCIAL STATEMENTS  
JUNE 30, 2019

EXHIBIT "H"

**NOTE 17: SPECIAL ITEMS**

The School District had a contribution of \$947,683.68 in the fiscal year from Barrow County toward the construction of athletic turf fields for Apalachee High School and Winder-Barrow High School.

(This page left intentionally blank)

BARROW COUNTY BOARD OF EDUCATION  
REQUIRED SUPPLEMENTARY INFORMATION  
SCHEDULE OF PROPORTIONATE SHARE OF THE NET PENSION LIABILITY  
TEACHERS RETIREMENT SYSTEM OF GEORGIA  
FOR THE YEAR ENDED JUNE 30

SCHEDULE "1"

Year Ended	School District's proportion of the net pension liability	School District's proportionate share of the net pension liability	State of Georgia's proportionate share of the net pension liability associated with the School District	Total	School District's covered payroll	School District's proportionate share of the net pension liability as a percentage of its covered payroll	Plan fiduciary net position as a percentage of the total pension liability
2019	0.594719%	\$ 110,392,585.00	\$ 471,850.00	\$ 110,864,435.00	\$ 71,144,105.55	155.17%	80.27%
2018	0.607629%	\$ 112,929,721.00	\$ 411,850.00	\$ 113,341,571.00	\$ 70,026,217.71	161.27%	79.33%
2017	0.604041%	\$ 124,620,393.00	\$ 528,982.00	\$ 125,149,375.00	\$ 66,544,306.24	187.27%	76.06%
2016	0.599861%	\$ 91,322,881.00	\$ 393,997.00	\$ 91,716,878.00	\$ 63,523,332.29	143.76%	81.44%
2015	0.603543%	\$ 76,249,697.00	\$ 231,196.00	\$ 76,480,893.00	\$ 61,738,810.11	123.50%	84.03%

BARROW COUNTY BOARD OF EDUCATION  
REQUIRED SUPPLEMENTARY INFORMATION  
SCHEDULE OF PROPORTIONATE SHARE OF THE NET PENSION LIABILITY  
EMPLOYEES' RETIREMENT SYSTEM OF GEORGIA  
FOR THE YEAR ENDED JUNE 30

SCHEDULE "2"

<u>Year Ended</u>	<u>School District's proportion of the net pension liability</u>	<u>School District's proportionate share of the net pension liability</u>	<u>School District's covered payroll</u>	<u>School District's proportionate share of the net pension liability as a percentage of covered payroll</u>	<u>Plan fiduciary position as a percentage of total pension liability</u>
2019	0.001988%	\$ 81,727.00	\$ 50,711.80	161.16%	76.68%
2018	0.002076%	\$ 84,313.00	\$ 50,911.46	165.61%	76.33%
2017	0.002083%	\$ 98,535.00	\$ 48,428.04	203.47%	72.34%
2016	0.002017%	\$ 81,717.00	\$ 46,118.54	177.19%	76.20%
2015	0.001803%	\$ 67,624.00	\$ 40,592.54	166.59%	77.99%

BARROW COUNTY BOARD OF EDUCATION  
REQUIRED SUPPLEMENTARY INFORMATION  
SCHEDULE OF PROPORTIONATE SHARE OF THE NET PENSION LIABILITY  
PUBLIC SCHOOLS EMPLOYEES RETIREMENT SYSTEM OF GEORGIA  
FOR THE YEAR ENDED JUNE 30

SCHEDULE "3"

Year Ended	School District's proportion of the net pension liability	School District's proportionate share of the net pension liability	State of Georgia's proportionate share of the net pension liability associated with the School District	Total	School District's covered payroll	School District's proportionate share of the net pension liability as a percentage of its covered payroll	Plan fiduciary net position as a percentage of the total pension liability
2019	0.00%	\$ -	\$ 1,057,943.00	\$ 1,057,943.00	\$ 3,346,275.00	N/A	85.26%
2018	0.00%	\$ -	\$ 951,640.00	\$ 951,640.00	\$ 3,308,495.81	N/A	85.69%
2017	0.00%	\$ -	\$ 1,194,924.00	\$ 1,194,924.00	\$ 2,662,254.99	N/A	81.00%
2016	0.00%	\$ -	\$ 818,369.00	\$ 818,369.00	\$ 2,675,995.22	N/A	87.00%
2015	0.00%	\$ -	\$ 670,954.00	\$ 670,954.00	\$ 2,334,651.88	N/A	88.29%

BARROW COUNTY BOARD OF EDUCATION  
REQUIRED SUPPLEMENTARY INFORMATION  
SCHEDULE OF PROPORTIONATE SHARE OF THE NET OPEB LIABILITY  
SCHOOL OPEB FUND  
FOR THE YEAR ENDED JUNE 30

SCHEDULE "4"

Year Ended	School District's proportion of the net OPEB liability	School District's proportionate share of the net OPEB liability	State of Georgia's proportionate share of the net OPEB liability associated with the School District	Total	School District's covered-employee payroll	School District's proportionate share of the net OPEB liability as a percentage of its covered- employee payroll	Plan fiduciary net position as a percentage of the total OPEB liability
2019	0.784842%	\$ 99,751,009.00	\$ -	\$ 99,751,009.00	\$ 62,419,660.99	159.81%	2.93%
2018	0.788795%	\$ 110,825,380.00	\$ -	\$ 110,825,380.00	\$ 61,303,196.01	180.78%	1.61%

BARROW COUNTY BOARD OF EDUCATION  
REQUIRED SUPPLEMENTARY INFORMATION  
SCHEDULE OF CONTRIBUTIONS  
TEACHERS RETIREMENT SYSTEM OF GEORGIA  
FOR THE YEAR ENDED JUNE 30

SCHEDULE "5"

Year Ended	Contractually required contribution	Contributions in relation to the contractually required contribution	Contribution deficiency (excess)	School District's covered payroll	Contribution as a percentage of covered payroll
2019	\$ 15,306,505.33	\$ 15,306,505.33	\$ -	\$ 73,483,701.58	20.83%
2018	\$ 11,909,355.80	\$ 11,909,355.80	\$ -	\$ 71,144,105.55	16.74%
2017	\$ 9,956,429.10	\$ 9,956,429.10	\$ -	\$ 70,026,217.71	14.22%
2016	\$ 9,455,738.40	\$ 9,455,738.40	\$ -	\$ 66,544,306.24	14.21%
2015	\$ 8,317,398.59	\$ 8,317,398.59	\$ -	\$ 63,523,332.29	13.09%



BARROW COUNTY BOARD OF EDUCATION  
REQUIRED SUPPLEMENTARY INFORMATION  
SCHEDULE OF CONTRIBUTIONS  
EMPLOYEES' RETIREMENT SYSTEM OF GEORGIA  
FOR THE YEAR ENDED JUNE 30

SCHEDULE "6"

Year Ended	Contractually required contribution	Contributions in relation to the contractually required contribution	Contribution deficiency (excess)	School District's covered payroll	Contribution as a percentage of covered payroll
2019	\$ 12,922.66	\$ 12,922.66	\$ -	\$ 52,149.66	24.78%
2018	\$ 12,581.58	\$ 12,581.58	\$ -	\$ 50,711.80	24.81%
2017	\$ 12,631.14	\$ 12,631.14	\$ -	\$ 50,911.46	24.81%
2016	\$ 11,971.44	\$ 11,971.44	\$ -	\$ 48,428.04	24.72%
2015	\$ 10,127.30	\$ 10,127.30	\$ -	\$ 46,118.54	21.96%

BARROW COUNTY BOARD OF EDUCATION  
REQUIRED SUPPLEMENTARY INFORMATION  
SCHEDULE OF CONTRIBUTIONS  
SCHOOL OPEB FUND  
FOR THE YEAR ENDED JUNE 30

SCHEDULE "7"

Year Ended	Contractually required contribution	Contributions in relation to the contractually required contribution	Contribution deficiency (excess)	School District's covered-employee payroll	Contribution as a percentage of covered-employee payroll
2019	\$ 4,198,686.00	\$ 4,198,686.00	\$ -	\$ 63,069,247.59	6.66%
2018	\$ 4,067,758.00	\$ 4,067,758.00	\$ -	\$ 62,419,660.99	6.52%
2017	\$ 4,112,840.00	\$ 4,112,840.00	\$ -	\$ 61,303,196.01	6.71%

**Teachers Retirement System**

**Changes of assumptions:** On November 18, 2015, the Board adopted recommended changes to the economic and demographic assumptions utilized by the System. Primary among the changes were the updates to rates of mortality, retirement, disability, withdrawal and salary increases. The expectation of retired life mortality was changed to RP-2000 White Collar Mortality Table with future mortality improvement projected to 2025 with the Society of Actuaries' projection scale BB (set forward one year for males).

In 2010 and later, the expectation of retired life mortality was changed to the RP-2000 Mortality Tables rather than the 1994 Group Annuity Mortality Table, which was used prior to 2010. In 2010, rates of withdrawal, retirement, disability and mortality were adjusted to more closely reflect actual experience. In 2010, assumed rates of salary increase were adjusted to more closely reflect actual and anticipated experience.

**Employees' Retirement System**

**Changes of benefit terms:**

- A new benefit tier was added for members joining the System on and after July 1, 2009.
- A one-time 3% payment was granted to certain retirees and beneficiaries effective July 2016.
- A one-time 3% payment was granted to certain retirees and beneficiaries effective July 2017.

**Changes of assumptions:** On March 15, 2018, the Board adopted a new funding policy. Because of this new funding policy, the assumed investment rate of return was reduced from 7.50% to 7.40% for the June 30, 2017 actuarial valuation. In addition, based on the Board's new funding policy, the assumed investment rate of return was further reduced by 0.10% from 7.40% to 7.30% as of the June 30, 2018 measurement date.

On December 17, 2015, the Board adopted recommended changes to the economic and demographic assumptions utilized by the System. Primary among the changes were the updates to rates of mortality, retirement, disability, withdrawal and salary increases.

**Public School Employees Retirement System**

**Changes of assumptions:** On March 15, 2018, the Board adopted a new funding policy. Because of this new funding policy, the assumed investment rate of return was reduced from 7.50% to 7.40% for June 30, 2017 actuarial valuation. In addition, based on the Board's new funding policy, the assumed investment rate of return was further reduced by 0.10% from 7.40% to 7.30% as of the June 30, 2018 measurement date.

On December 17, 2015, the Board adopted recommended changes to the economic and demographic assumptions utilized by the System. Primary among the changes were the updates to rates of mortality, retirement and withdrawal. The expectation of retired life mortality was changed to the RP-2000 Blue Collar Mortality Table projected to 2025 with projection scale BB (set forward 3 years for males and 2 years for females).

In 2010 and later, the expectation of retired life mortality was changed to the RP-2000 Mortality Tables rather than the 1994 Group Annuity Mortality Table, which was used prior to 2010. In 2010, rates of withdrawal, retirement, disability and mortality were adjusted to more closely reflect actual experience.

**School OPEB Fund**

**Changes of benefit terms:** There have been no changes in benefit terms.

**Changes of assumptions:** June 30, 2017 valuation: the June 30, 2017 actuarial valuation was revised, for various factors, including the methodology used to determine how employees and retirees were assigned to each of the OPEB Funds and anticipated participation percentages. Current and former employees of State organizations (including technical colleges, community service boards and public health departments) are now assigned to the State OPEB fund based on their last employer payroll location: irrespective of retirement affiliation.

The discount rate was updated from 3.60% as of June 30, 2017 to 5.22% as of June 30, 2018.

BARROW COUNTY BOARD OF EDUCATION  
GENERAL FUND  
SCHEDULE OF REVENUES, EXPENDITURES AND CHANGES IN FUND BALANCES  
BUDGET AND ACTUAL  
YEAR ENDED JUNE 30, 2019

SCHEDULE "9"

	NONAPPROPRIATED BUDGETS		ACTUAL	VARIANCE
	ORIGINAL (1)	FINAL (1)	AMOUNTS	OVER/UNDER
<u>REVENUES</u>				
Property Taxes	\$ 39,114,000.00	\$ 39,114,000.00	\$ 41,387,868.55	\$ 2,273,868.55
Sales Taxes	886,000.00	886,000.00	1,220,975.16	334,975.16
State Funds	85,207,913.00	85,613,284.00	86,278,910.30	665,626.30
Federal Funds	13,695,271.00	14,509,940.08	13,611,292.12	(898,647.96)
Charges for Services	1,664,400.00	1,664,400.00	3,540,587.02	1,876,187.02
Investment Earnings	50,000.00	50,000.00	554,931.45	504,931.45
Miscellaneous	984,037.00	1,146,512.00	2,110,669.60	964,157.60
Total Revenues	141,601,621.00	142,984,136.08	148,705,234.20	5,721,098.12
<u>EXPENDITURES</u>				
Current				
Instruction	91,449,880.89	91,786,998.36	87,781,166.23	4,005,832.13
Support Services				
Pupil Services	4,949,551.34	5,147,306.53	5,010,785.95	136,520.58
Improvement of Instructional Services	6,920,899.37	7,263,092.40	6,494,064.01	769,028.39
Educational Media Services	2,017,643.08	2,023,201.65	2,053,915.80	(30,714.15)
General Administration	1,133,455.09	1,240,352.19	1,042,934.62	197,417.57
School Administration	7,997,645.72	8,007,889.26	7,803,591.85	204,297.41
Business Administration	2,428,091.15	2,428,273.15	2,171,941.79	256,331.36
Maintenance and Operation of Plant	9,764,452.15	9,817,701.15	9,368,100.54	449,600.61
Student Transportation Services	7,837,521.30	8,095,283.10	8,218,118.48	(122,835.38)
Central Support Services	811,831.52	822,302.90	978,329.10	(156,026.20)
Other Support Services	24,781.00	23,743.50	13,899.74	9,843.76
Enterprise Operations	556,170.00	501,170.00	2,817,150.37	(2,315,980.37)
Food Services Operation	8,153,016.00	8,153,016.00	8,632,431.79	(479,415.79)
Total Expenditures	144,044,938.61	145,310,330.19	142,386,430.27	2,923,899.92
Excess of Revenues over (under) Expenditures	(2,443,317.61)	(2,326,194.11)	6,318,803.93	8,644,998.04
<u>OTHER FINANCING SOURCES (USES)</u>				
Other Sources	493,673.00	493,673.00	-	(493,673.00)
Other Uses	(493,673.00)	(493,673.00)	-	493,673.00
Total Other Financing Sources (Uses)	-	-	-	-
Net Change in Fund Balances	(2,443,317.61)	(2,326,194.11)	6,318,803.93	8,644,998.04
Fund Balances - Beginning	20,692,086.75	20,692,086.75	21,910,108.05	1,218,021.30
Fund Balances - Ending	\$ 18,248,769.14	\$ 18,365,892.64	\$ 28,228,911.98	\$ 9,863,019.34

Notes to the Schedule of Revenues, Expenditures and Changes in Fund Balances Budget and Actual

- (1) Original and Final Budget amounts do not include the budgeted revenues or expenditures of the various principal accounts.  
The actual revenues and expenditures of the various principal accounts are \$4,187,308.47 and \$3,883,302.85, respectively.

The accompanying schedule of revenues, expenditures and changes in fund balances budget and actual is presented on the modified accrual basis of accounting which is the basis of accounting used in the presentation of the fund financial statements.

BARROW COUNTY BOARD OF EDUCATION  
SCHEDULE OF EXPENDITURES OF FEDERAL AWARDS  
YEAR ENDED JUNE 30, 2019

SCHEDULE "10"

FUNDING AGENCY PROGRAM/GRANT	CFDA NUMBER	PASS- THROUGH ENTITY ID NUMBER	EXPENDITURES IN PERIOD
Agriculture, U. S. Department of			
Child Nutrition Cluster			
Pass-Through From Georgia Department of Education			
Food Services			
School Breakfast Program	10.553	195GA324N1099	\$ 2,258,926.92
National School Lunch Program	10.555	195GA324N1099	6,094,775.12
Commercial Warehouse Storage and Delivery Grant	10.555	185GA904N2533	8,187.65
Total Child Nutrition Cluster			8,361,889.69
Other Programs			
Pass-Through From Georgia Department of Education			
Food Services			
Child Nutrition Discretionary Grants Limited Availability	10.579	185GA350N8103	20,000.00
Total U. S. Department of Agriculture			8,381,889.69
Special Education Cluster			
Pass-Through From Georgia Department of Education			
Special Education			
Grants to States	84.027	H027A170073	151,571.00
Grants to States	84.027	H027A180073	2,239,547.83
Preschool Grants	84.173	H173A170081	12,772.00
Preschool Grants	84.173	H173A180081	54,397.56
Total Special Education Cluster			2,458,288.39
Other Programs			
Pass-Through From Georgia Department of Education			
Career and Technical Education - Basic Grants to States	84.048	V048A180010	127,980.41
Education for Homeless Children and Youth	84.196	S196A180011	35,623.08
English Language Acquisition State Grants	84.365	S365A170010	12,724.00
English Language Acquisition State Grants	84.365	S365A180010	123,942.09
Migrant Education - State Grant Program	84.011	S011A170011	1,191.00
Migrant Education - State Grant Program	84.011	S011A180011	19,493.52
Student Support and Academic Enrichment Program	84.424A	S424A170011	11,843.00
Student Support and Academic Enrichment Program	84.424A	S424A180011	135,405.66
Supporting Effective Instruction State Grants	84.367	S367A170001	140,506.00
Supporting Effective Instruction State Grants	84.367	S367A180001	227,094.95
Title I Grants to Local Educational Agencies	84.010	S010A170010	161,640.00
Title I Grants to Local Educational Agencies	84.010	S010A180010	2,809,463.74
Twenty-First Century Community Learning Centers	84.287	S287C170010	85,226.08
Twenty-First Century Community Learning Centers	84.287	S287C180010	190,718.91
Total Other Programs			4,082,852.44
Total U. S. Department of Education			6,541,140.83
Defense, U. S. Department of			
Direct			
Department of the Army			
R.O.T.C. Program	12.UNKNOWN		143,132.99
Total Expenditures of Federal Awards			\$ 15,066,163.51

Notes to the Schedule of Expenditures of Federal Awards

Note 1. Basis of Presentation

The accompanying schedule of expenditures of federal awards (the "Schedule") includes the federal award activity of the Barrow County Board of Education (the "Board") under programs of the federal government for the year ended June 30, 2019. The information in this Schedule is presented in accordance with the requirements of Title 2 U.S. Code of Federal Regulations Part 200, Uniform Administrative Requirements, Cost Principles, and Audit Requirements for Federal Awards (Uniform Guidance). Because the Schedule presents only a selected portion of the operations of the Board, it is not intended to and does not present the financial position or changes in net position of the Board.

Note 2. Summary of Significant Accounting Policies

Expenditures reported on the Schedule are reported on the modified accrual basis of accounting. Such expenditures are recognized following the cost principles contained in the Uniform Guidance, wherein certain types of expenditures are not allowable or are limited as to reimbursement.

Note 3. Indirect Cost Rate

The Board has elected not to use the 10-percent de minimis indirect cost rate as allowed under the Uniform Guidance.

See notes to the basic financial statements.

BARROW COUNTY BOARD OF EDUCATION  
SCHEDULE OF STATE REVENUE  
YEAR ENDED JUNE 30, 2019

SCHEDULE "11"

<u>AGENCY/FUNDING</u>	GOVERNMENTAL FUND TYPE GENERAL FUND
<b>GRANTS</b>	
Bright From the Start:	
Georgia Department of Early Care and Learning	
Pre-Kindergarten Program	\$ 1,795,676.23
Education, Georgia Department of	
Quality Basic Education	
Direct Instructional Cost	
Kindergarten Program	3,431,394.00
Kindergarten Program - Early Intervention Program	1,681,313.00
Primary Grades (1-3) Program	9,470,285.00
Primary Grades - Early Intervention (1-3) Program	1,924,203.00
Upper Elementary Grades (4-5) Program	5,184,405.00
Upper Elementary Grades - Early Intervention (4-5) Program	784,328.00
Middle Grades (6-8) Program	9,174,720.00
High School General Education (9-12) Program	7,284,113.00
Vocational Laboratory (9-12) Program	2,805,207.00
Students with Disabilities	13,585,376.00
Gifted Student - Category VI	4,131,407.00
Remedial Education Program	929,946.00
Alternative Education Program	632,798.00
English Speakers of Other Languages (ESOL)	2,544,686.00
Media Center Program	1,618,063.00
20 Days Additional Instruction	472,593.00
Staff and Professional Development	288,552.00
Principal Staff and Professional Development	4,019.00
Indirect Cost	
Central Administration	1,822,015.00
School Administration	2,935,276.00
Facility Maintenance and Operations	3,638,882.00
Charter System Adjustment	1,359,495.00
One Time QBE Adjustment	(801,360.00)
Categorical Grants	
Pupil Transportation	
Regular	1,125,349.00
Nursing Services	286,374.00
Education Equalization Funding Grant	6,736,326.00
Other State Programs	
Food Services	193,416.00
Math and Science Supplements	183,304.42
Preschool Disability Services	290,361.66
Pupil Transportation - State Bonds	308,880.00
Teachers Retirement	61,976.04
Vocational Education	216,079.17
Governor's Office of Student Achievement	
Innovation Fund	727.78
Innovation Summit Pilot Grant	7,000.00
Office of the State Treasurer	
Public School Employees Retirement	171,724.00
	\$ 86,278,910.30

(This page left intentionally blank)

BARROW COUNTY BOARD OF EDUCATION  
SCHEDULE OF APPROVED LOCAL OPTION SALES TAX PROJECTS  
YEAR ENDED JUNE 30, 2019

SCHEDULE "12"

PROJECT	ORIGINAL ESTIMATED COST (1)	CURRENT ESTIMATED COSTS (2)	AMOUNT EXPENDED IN CURRENT YEAR (3)	AMOUNT EXPENDED IN PRIOR YEARS (3)	TOTAL COMPLETION COST	EXCESS PROCEEDS NOT EXPENDED	ESTIMATED COMPLETION DATE
<b>SPLOST #5</b>							
A(i) the acquisition, construction, and equipping of two new schools and facilities, including but not limited to new school buildings, physical education/athletic facilities and equipment, classrooms, lunchrooms, gymnasiums, and auditoriums, renovations and equipment for existing facilities, and the acquisition and purchase of any property necessary and desirable therefore, both real and personal property, including but not limited to technology, safety and security equipment and transportation facilities and equipment.	\$ 20,826,049.37	\$ 45,826,049.37	\$ 14,002,059.94	\$ 17,972,750.58	\$ -	\$ -	
A(ii) paying capitalized interest on the bonds.	-	-	-	-	-	-	
A(iii) paying the costs of issuing the bonds.	179,783.63	179,783.63	-	179,783.63	-	-	
B(i) paying a portion of the debt service on the bonds.	5,070,236.39	5,070,236.39	1,059,750.00	1,362,311.39	-	-	
(B)(ii) paying debt service on the outstanding Barrow County School District General Obligation Bonds, Series 2010, Series 2012A, Series 2012B, Series 2014 coming due February 1, 2017, through and including February 1, 2022, the maximum amount to be retired not to exceed \$36,994,167.10. The maximum cost of such projects to be funded from sales and use tax proceeds not to exceed \$58,000,000.00.	<u>31,923,930.61</u>	<u>31,923,930.61</u>	<u>7,221,365.00</u>	<u>8,381,628.75</u>	<u>-</u>	<u>-</u>	
<b>SPLOST #5 Totals</b>	<u><b>\$ 58,000,000.00</b></u>	<u><b>\$ 83,000,000.00</b></u>	<u><b>\$ 22,283,174.94</b></u>	<u><b>\$ 27,896,474.35</b></u>	<u><b>\$ -</b></u>	<u><b>\$ -</b></u>	<b>June 2022</b>

(1) The School District's original cost estimate as specified in the resolution calling for the imposition of the Local Option Sales Tax.

(2) The School District's current estimate of total cost for the projects. Includes all cost from project inception to completion.

(3) The voters of Barrow County approved the imposition of a 1% sales tax to fund the above projects and retire associated debt. Amounts expended for these projects may include sales tax proceeds, state, local property taxes, bond proceeds and/or other funds over the life of the projects.



## SECTION II

### COMPLIANCE AND INTERNAL CONTROL REPORTS



## DEPARTMENT OF AUDITS AND ACCOUNTS

270 Washington Street, S.W., Suite 1-156  
Atlanta, Georgia 30334-8400

**Greg S. Griffin**  
STATE AUDITOR  
(404) 656-2174

### INDEPENDENT AUDITOR'S REPORT ON COMPLIANCE FOR EACH MAJOR FEDERAL PROGRAM AND REPORT ON INTERNAL CONTROL OVER COMPLIANCE REQUIRED BY THE UNIFORM GUIDANCE

The Honorable Brian P. Kemp, Governor of Georgia  
Members of the General Assembly of the State of Georgia  
Members of the State Board of Education  
and  
Superintendent and Members of the  
Barrow County Board of Education

#### **Report on Compliance for Each Major Federal Program**

We have audited the Barrow County Board of Education (School District) compliance with the types of compliance requirements described in the *OMB Compliance Supplement* that could have a direct and material effect on each of its major federal programs for the year ended June 30, 2019. The School District's major federal programs are identified in the *Summary of Auditor's Results* section of the accompanying *Schedule of Findings and Questioned Costs*.

#### ***Management's Responsibility***

Management is responsible for compliance with federal statutes, regulations, and the terms and conditions of its federal awards applicable to its federal programs.

#### ***Auditor's Responsibility***

Our responsibility is to express an opinion on compliance for each of the School District's major federal programs based on our audit of the types of compliance requirements referred to above. We conducted our audit of compliance in accordance with auditing standards generally accepted in the United States of America; the standards applicable to financial audits contained in *Government Auditing Standards*, issued by the Comptroller General of the United States; and the audit requirements of Title 2 U.S. Code of Federal Regulations Part 200, *Uniform Administrative Requirements, Cost Principles, and Audit Requirements for Federal Awards* (Uniform Guidance). Those standards and the Uniform Guidance require that we plan and perform the audit to obtain reasonable assurance about whether noncompliance with the types of compliance requirements referred to above that could have a direct and material effect on a major federal program occurred. An audit includes examining, on a test basis, evidence about the School District's compliance with those requirements and performing such other procedures as we considered necessary in the circumstances.

We believe that our audit provides a reasonable basis for our opinion on compliance for each major federal program. However, our audit does not provide a legal determination of the School District's compliance.

### ***Opinion on Each Major Federal Program***

In our opinion, the School District complied, in all material respects, with the types of compliance requirements referred to above that could have a direct and material effect on each of its major federal programs for the year ended June 30, 2019.

### **Report on Internal Control over Compliance**

Management of the School District is responsible for establishing and maintaining effective internal control over compliance with the types of compliance requirements referred to above. In planning and performing our audit of compliance, we considered the School District's internal control over compliance with the types of requirements that could have a direct and material effect on each major federal program to determine the auditing procedures that are appropriate in the circumstances for the purpose of expressing an opinion on compliance for each major federal program and to test and report on internal control over compliance in accordance with the Uniform Guidance, but not for the purpose of expressing an opinion on the effectiveness of internal control over compliance. Accordingly, we do not express an opinion on the effectiveness of the School District's internal control over compliance.

*A deficiency in internal control over compliance* exists when the design or operation of a control over compliance does not allow management or employees, in the normal course of performing their assigned functions, to prevent, or detect and correct, noncompliance with a type of compliance requirement of a federal program on a timely basis. *A material weakness in internal control over compliance* is a deficiency, or combination of deficiencies, in internal control over compliance, such that there is a reasonable possibility that material noncompliance with a type of compliance requirement of a federal program will not be prevented, or detected and corrected, on a timely basis. *A significant deficiency in internal control over compliance* is a deficiency, or a combination of deficiencies, in internal control over compliance with a type of compliance requirement of a federal program that is less severe than a material weakness in internal control over compliance, yet important enough to merit attention by those charged with governance.

Our consideration of internal control over compliance was for the limited purpose described in the first paragraph of this section and was not designed to identify all deficiencies in internal control over compliance that might be material weaknesses or significant deficiencies. We did not identify any deficiencies in internal control over compliance that we consider to be material weaknesses. However, material weaknesses may exist that have not been identified.

The purpose of this report on internal control over compliance is solely to describe the scope of our testing of internal control over compliance and the results of that testing based on the requirements of the Uniform Guidance. Accordingly, this report is not suitable for any other purpose.

Respectfully submitted,

A handwritten signature in black ink, appearing to read "Greg S. Griffin".

Greg S. Griffin  
State Auditor

March 25, 2020



## DEPARTMENT OF AUDITS AND ACCOUNTS

270 Washington Street, S.W., Suite 1-156  
Atlanta, Georgia 30334-8400

**Greg S. Griffin**  
STATE AUDITOR  
(404) 656-2174

### INDEPENDENT AUDITOR'S REPORT ON INTERNAL CONTROL OVER FINANCIAL REPORTING AND ON COMPLIANCE AND OTHER MATTERS BASED ON AN AUDIT OF FINANCIAL STATEMENTS PERFORMED IN ACCORDANCE WITH GOVERNMENT AUDITING STANDARDS

The Honorable Brian P. Kemp, Governor of Georgia  
Members of the General Assembly of the State of Georgia  
Members of the State Board of Education  
and  
Superintendent and Members of the  
Barrow County Board of Education

We have audited, in accordance with the auditing standards generally accepted in the United States of America and the standards applicable to financial audits contained in *Government Auditing Standards* issued by the Comptroller General of the United States, the financial statements of the governmental activities, each major fund, and the aggregate remaining fund information of the Barrow County Board of Education (School District), as of and for the year ended June 30, 2019, and the related notes to the financial statements, which collectively comprise the School District's basic financial statements, and have issued our report thereon dated March 25, 2020.

#### Internal Control Over Financial Reporting

In planning and performing our audit of the financial statements, we considered the School District's internal control over financial reporting (internal control) to determine the audit procedures that are appropriate in the circumstances for the purpose of expressing our opinions on the financial statements, but not for the purpose of expressing an opinion on the effectiveness of the School District's internal control. Accordingly, we do not express an opinion on the effectiveness of the School District's internal control.

A *deficiency in internal control* exists when the design or operation of a control does not allow management or employees, in the normal course of performing their assigned functions, to prevent, or detect and correct, misstatements on a timely basis. A *material weakness* is a deficiency, or combination of deficiencies, in internal control, such that there is a reasonable possibility that a material misstatement of the entity's financial statements will not be prevented, or detected and corrected on a timely basis. A *significant deficiency* is a deficiency, or a combination of deficiencies, in internal control that is less severe than a material weakness, yet important enough to merit attention by those charged with governance.

Our consideration of internal control was for the limited purpose described in the first paragraph of this section and was not designed to identify all deficiencies in internal control that might be material weaknesses or significant deficiencies. Given these limitations, during our audit we did not identify any deficiencies in internal control that we consider to be material weaknesses. However, material weaknesses may exist that have not been identified.

## Compliance and Other Matters

As part of obtaining reasonable assurance about whether the School District's financial statements are free from material misstatement, we performed tests of its compliance with certain provisions of laws, regulations, contracts and grant agreements, noncompliance with which could have a direct and material effect on the determination of financial statement amounts. However, providing an opinion on compliance with those provisions was not an objective of our audit, and accordingly, we do not express such an opinion. The results of our tests disclosed no instances of noncompliance or other matters that are required to be reported under *Government Auditing Standards*.

## Purpose of this Report

The purpose of this report is solely to describe the scope of our testing of internal control and compliance and the results of that testing, and not to provide an opinion on the effectiveness of the School District's internal control or on compliance. This report is an integral part of an audit performed in accordance with *Government Auditing Standards* in considering the School District's internal control and compliance. Accordingly, this communication is not suitable for any other purpose.

Respectfully submitted,

A handwritten signature in black ink, appearing to read "Greg S. Griffin". The signature is fluid and cursive, with the first and last names being more prominent.

Greg S. Griffin  
State Auditor

March 25, 2020

### SECTION III

#### AUDITEE'S RESPONSE TO PRIOR YEAR FINDINGS AND QUESTIONED COSTS

BARROW COUNTY BOARD OF EDUCATION  
AUDITEE'S RESPONSE  
SUMMARY SCHEDULE OF PRIOR YEAR FINDINGS AND QUESTIONED COSTS  
YEAR ENDED JUNE 30, 2019

PRIOR YEAR FINANCIAL STATEMENT FINDINGS AND QUESTIONED COSTS

No matters were reported.

PRIOR YEAR FEDERAL AWARD FINDINGS AND QUESTIONED COSTS

No matters were reported.

## SECTION IV

### FINDINGS AND QUESTIONED COSTS



BARROW COUNTY BOARD OF EDUCATION  
SCHEDULE OF FINDINGS AND QUESTIONED COSTS  
YEAR ENDED JUNE 30, 2019

**I SUMMARY OF AUDITOR'S RESULTS**

**Financial Statements**

Type of auditor's report issue:  
Governmental Activities; General Fund; Capital Projects Fund; Debt  
Service Fund; Aggregate Remaining Fund Information Unmodified

Internal control over financial reporting:  
▪ Material weakness identified? No  
▪ Significant deficiency identified? None Reported

Noncompliance material to financial statements noted: No

**Federal Awards**

Internal Control over major programs:  
▪ Material weakness identified? No  
▪ Significant deficiency identified? None Reported

Type of auditor's report issued on compliance for major programs:  
All major programs Unmodified

Any audit findings disclosed that are required to be reported in  
accordance with 2 CFR 200.516(a)? No

Identification of major programs:

<u>CFDA Numbers</u>	<u>Name of Federal Program or Cluster</u>
10.553, 10.555	Child Nutrition Cluster

Dollar threshold used to distinguish between Type A and Type B programs: \$750,000.00

Auditee qualified as low-risk auditee? Yes

**II FINANCIAL STATEMENT FINDINGS AND QUESTIONED COSTS**

No matters were reported.

**III FEDERAL AWARD FINDINGS AND QUESTIONED COSTS**

No matters were reported.